

**SBR**  
Sunteck Beach Residences

Luxury Beachfront Destination



- 21. Sandpit
- 22. Landscape Court
- 23. Flower Garden
- 24. Meditation Court
- 25. Aromatic Garden
- 26. Tree Groove
- 27. Lily Pond
- 28. Floral Sweep
- 29. Green Glade
- 30. Lawn
- 31. Sit Out
- 32. Geometric Mound
- 33. Cove Seating
- 34. Mound Seating
- 35. Shaded Seating
- 36. Seating Court
- 37. Crescent Seating
- 38. Senior Citizen Sit Out
- 39. Pavilion Seating
- 40. Arrival Waterbody
- 41. Club Water Feature
- 42. Contemplative Waterbody
- 43. Reflective Waterbody
- 44. Paved Plaza
- 45. Stepped Retail Plaza
- 46. Roundabout
- 47. Entry/Exit
- 48. Drop-Off
- 49. Feature Wall
- 50. Pedestrian Pathway
- 51. Security Cabin
- 52. Driveway

**LEGENDS:**

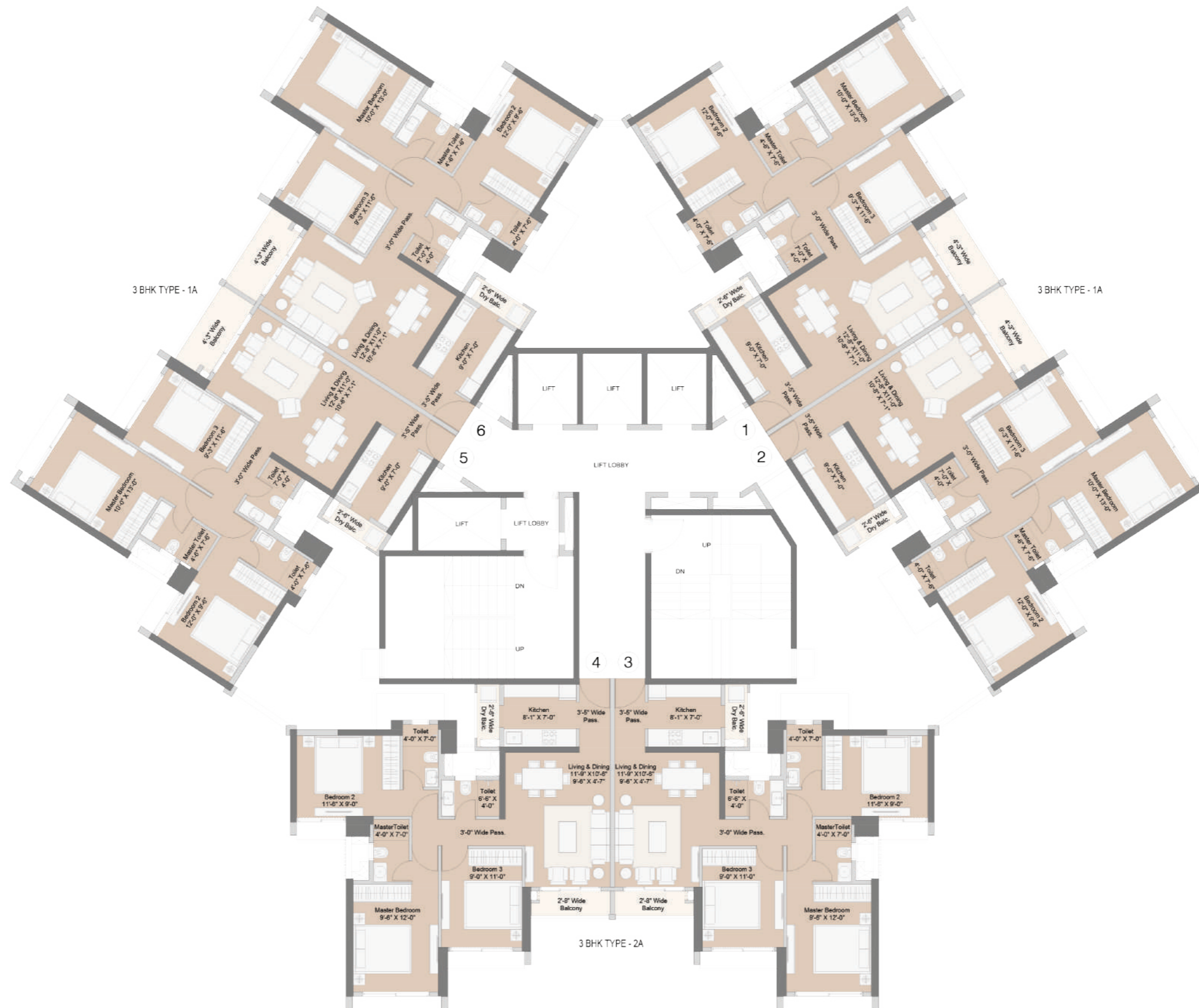
- 1. Club
- 2. Swimming Pool
- 3. Kids Pool Area
- 4. Deck
- 5. Changing Room
- 6. Golf Amenity
- 7. Multipurpose Court
- 8. Half Basketball Court
- 9. Tennis Court
- 10. Cricket Practice Pitch
- 11. Fitness Court
- 12. Garden
- 13. Skating Rink
- 14. Amphitheatre
- 15. Stage with Peripheral Seating
- 16. Jogging Track
- 17. Party Lawn
- 18. Square Pavilion
- 19. Yoga Garden
- 20. Kids Play Area

**MASTER LAYOUT PLAN**

MAHARERA NO: P99000045490 | P99000045499 | P99000045599. Details available at <https://maharera.mahaonline.gov.in>

Disclaimer: The project Sunteck Beach Residences 1, Sunteck Beach Residences 2 & Sunteck Beach Residences 4 ("Projects") are being developed by Sunteck Real Estates Private Ltd. ("Promoter"). The layout plan, the number of buildings / villas / towers / wings / structures and or flat layout, unit areas, the common areas, facilities and amenities, information, pictures, images, drawings, specifications, sketches and other details herein are merely creative imagination and an Architect's representation of proposed development which are only illustrative/indicative in nature. The Specifications, amenities and facilities will be as set out in the Agreement for Sale and on the RERA website under Registration No. P99000045490 | P99000045499 | P99000045599. Details available at <https://maharera.mahaonline.gov.in>. The plans and the location of the amenities may be subject to modification/change/revision/alteration in terms of approvals, orders, directions and/or regulations of the concerned/competent authorities, and/or for compliance with laws/regulations in force from time to time. The common areas and common amenities for the entire layout shall be made available for the entire project and will be completed and handed over after completion of the development of the entire Sunteck Beach Residences layout. The layout will have additional towers and each of building in the layout will have additional floors upto 30 floors or such upper floors as may be approved by competent authority & details of such proposed/ additional FSI & amended plans will be uploaded on RERA web site from time to time. The podium and parking displayed are proposed & intended development subject to changes in plan and subject to approval of competent authorities. The approved villas (as per current plan) are a separate part of the layout and will have independent ingress/egress from the internal layout roads. The proposed additional villas are part of future development subject to the approval of competent authorities. The proposed club and hotel are not part of common amenity of the layout and are additional facilities (that can be availed by the residents of the layout as per applicable terms & conditions for their use) on the plot appurtenant to the layout. The proposed road network around the layout is as per DP and not part of the Development of the layout. The adjoining plot is reserved for playground as per current applicable DCR. The proposed MHADA housing on adjacent plot / reservation, the future development (mixed use, including commercial, office, retail) as shown in the layout are proposed and are subject to modification and change as per the approval of competent authorities. The modification/alteration will be by following due procedure as prescribed under the Real Estate (Regulation and Development) Act, 2016, ("RERA") read with the provisions of the Maharashtra Real Estate (Regulation and Development) (Registration of real estate projects, Registration of real estate agents, rates of interest and disclosures on website) Rules, 2017 and the Rules and Regulations framed under RERA for Maharashtra ("RERA Rules") and the relevant applicable disclosures shall be made at an appropriate time. This electronic/printed material does not constitute any offer and/or contract of any type between the Promoter and the recipient.



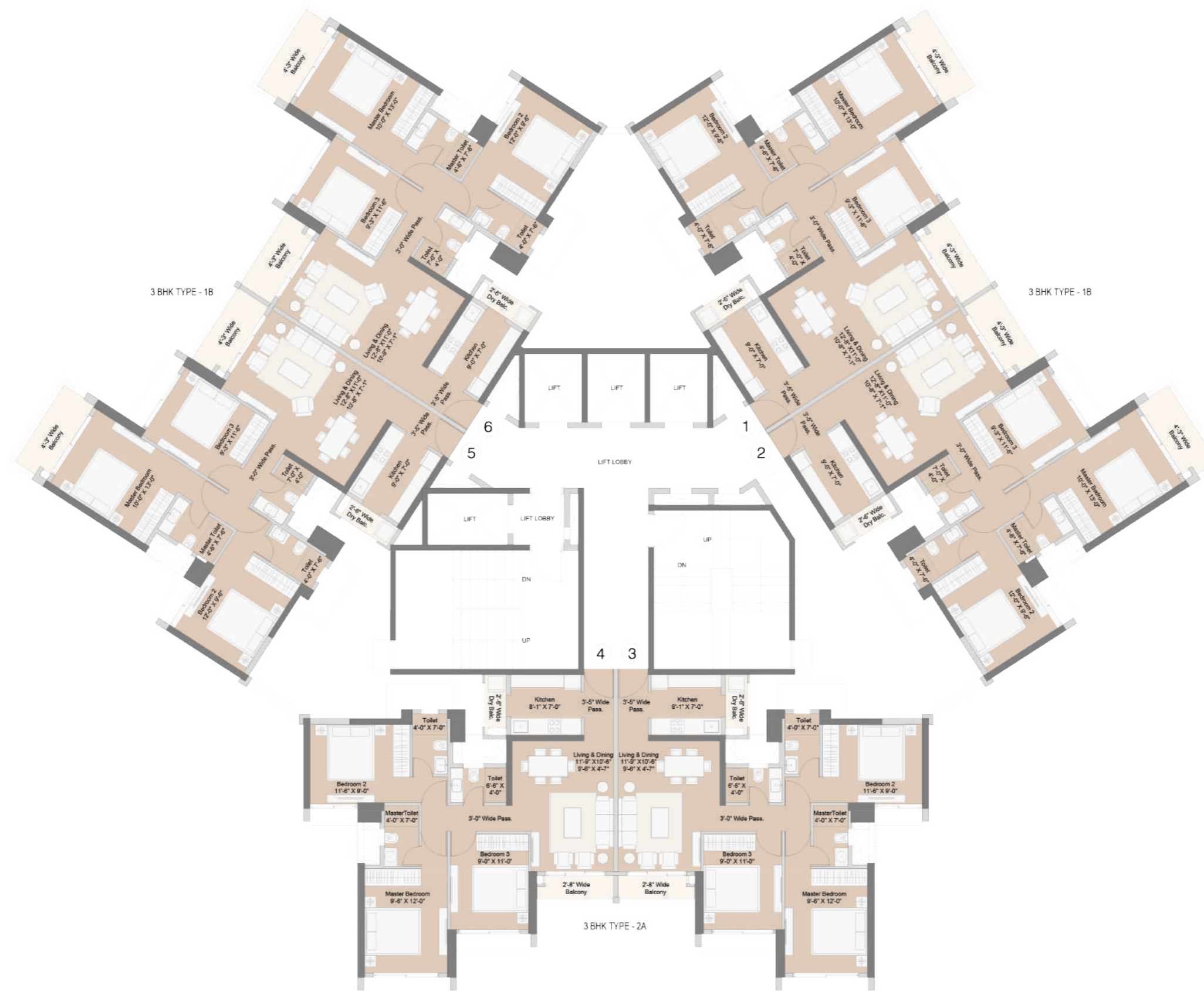


**TYPICAL FLOOR PLAN  
TOWERS – A1, A2 (6<sup>TH</sup> TO 22<sup>ND</sup> FLOOR)**

Note: Units 3 & 4 on floors 7, 12, 17, 22, 27, 32 are on hold. Refer inventory list for refuge units & refuge adjacent units on above mentioned floor.

MAHARERA NO: P99000045490 | P99000045499 | P99000045599. Details available at <https://maharera.mahaonline.gov.in>



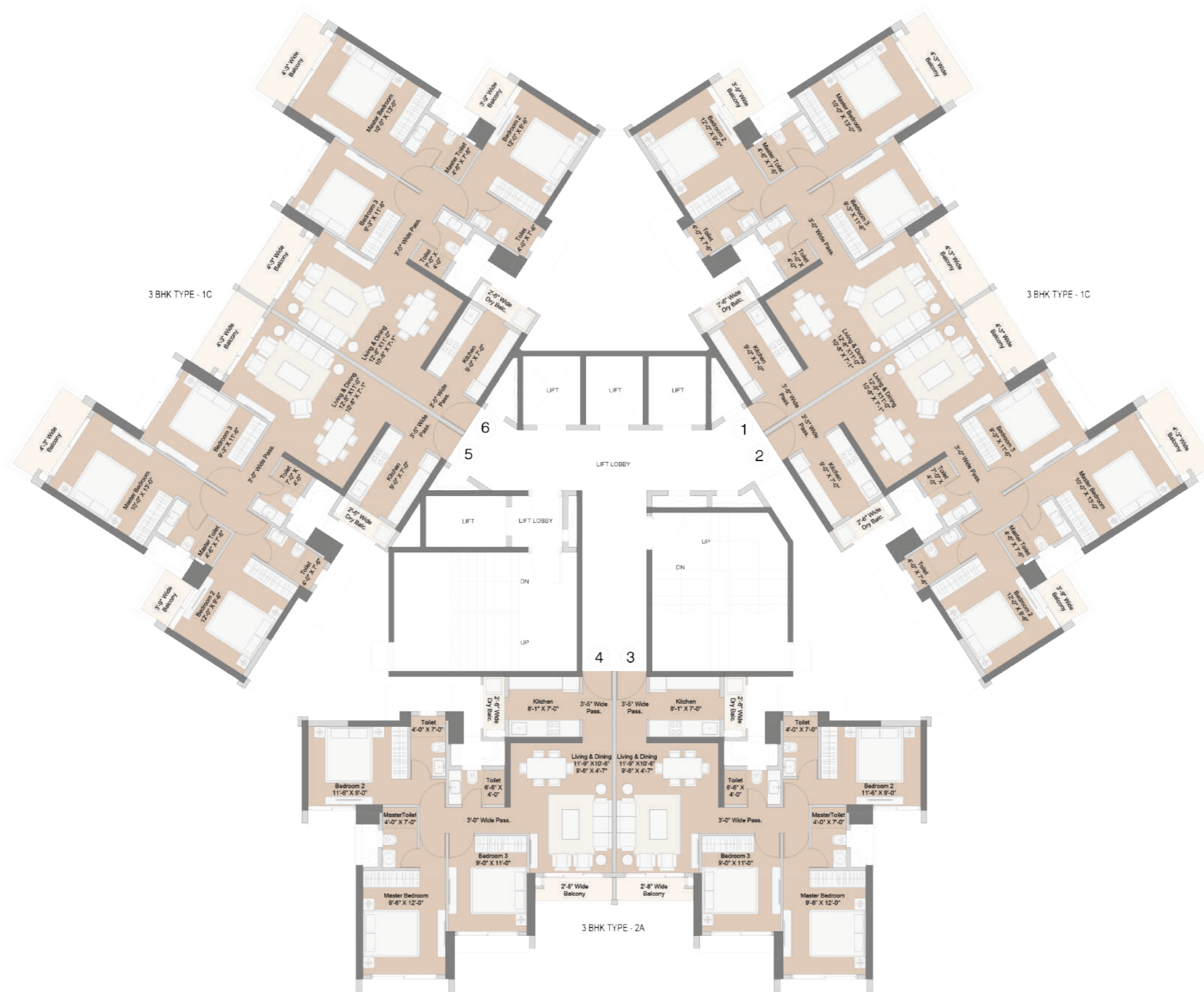


**TYPICAL FLOOR PLAN  
TOWERS – A1, A2 (23<sup>RD</sup> TO 30<sup>TH</sup> FLOOR)**

Note: Units 3 & 4 on floors 7, 12, 17, 22, 27, 32 are on hold. Refer inventory list for refuge units & refuge adjacent units on above mentioned floor.

MAHARERA NO: P99000045490 | P99000045499 | P99000045599. Details available at <https://maharera.mahaonline.gov.in>



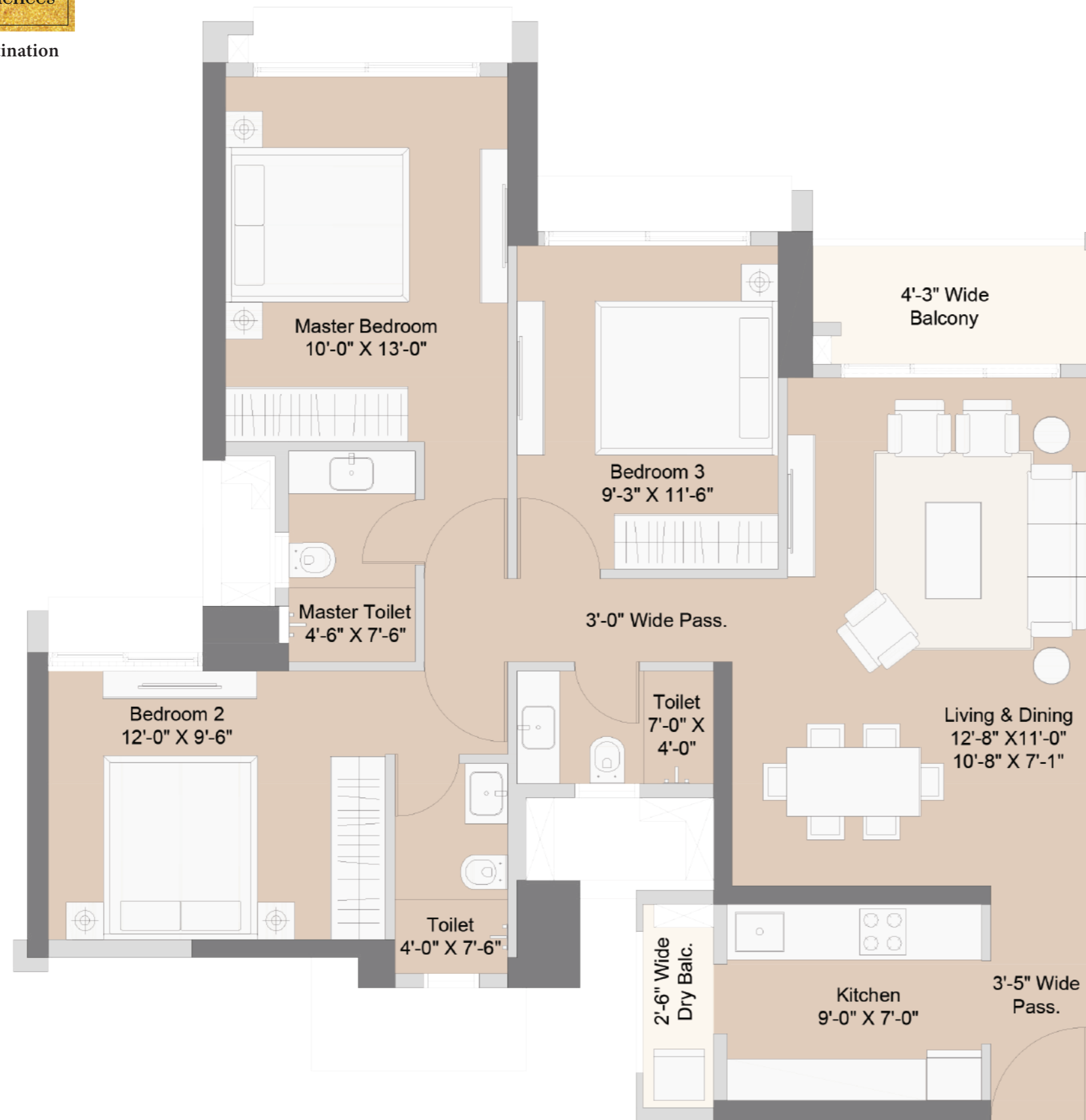


**TYPICAL FLOOR PLAN  
TOWERS - A1, A2 (31<sup>ST</sup> TO 35<sup>TH</sup> FLOOR)**

Note: Units 3 & 4 on floors 7, 12, 17, 22, 27, 32 are on hold. Refer inventory list for refuge units & refuge adjacent units on above mentioned floor.

MAHARERA NO: P99000045490 | P99000045499 | P99000045599. Details available at <https://maharera.mahaonline.gov.in>





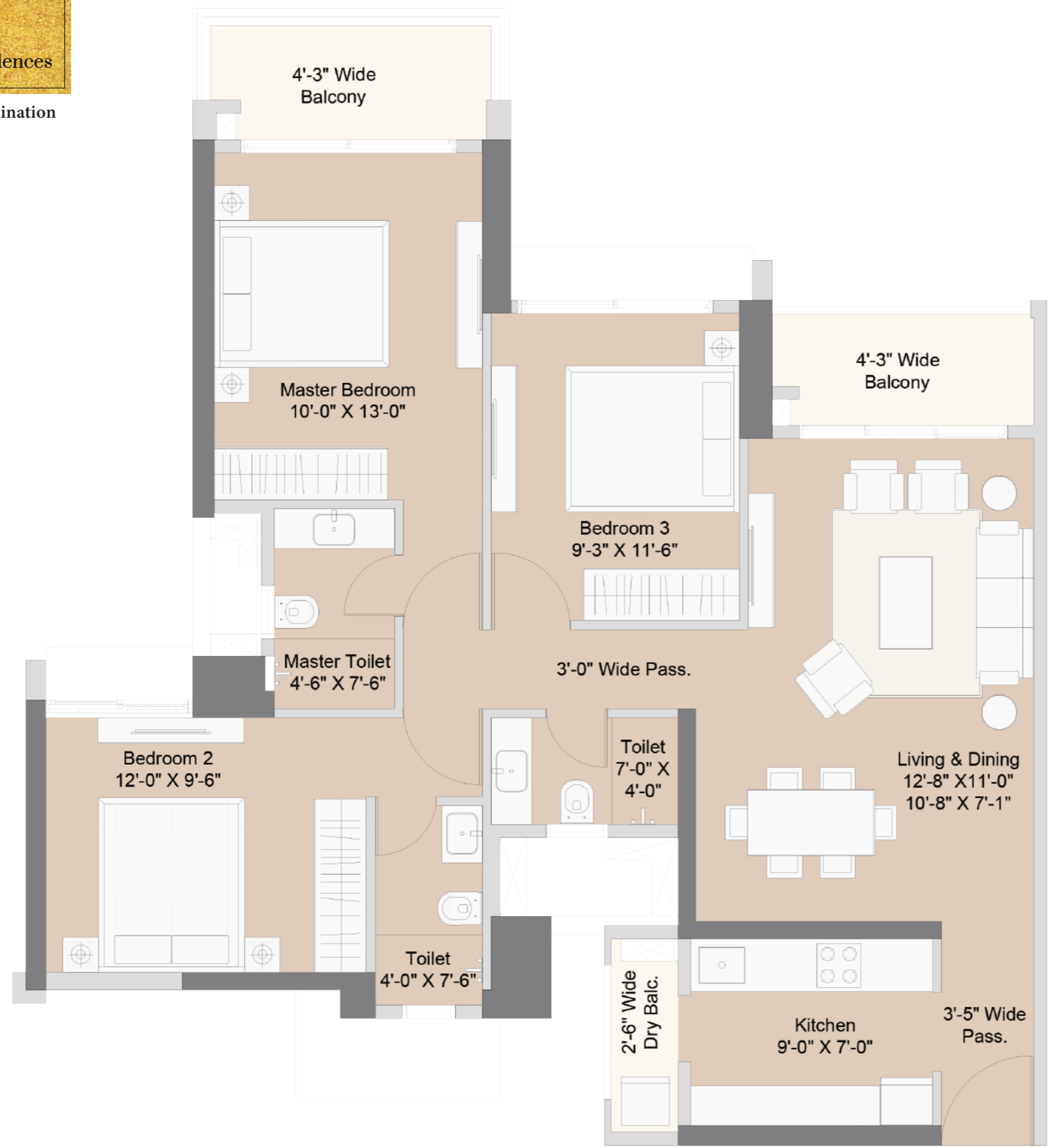
**TOWERS (A1, A2)**

3BHK Type - 1A	SQ. FT.	SQ. MT.
RERA Carpet	851.51	79.11
Balcony	56.19	5.22
<b>Total Area</b>	<b>907.73</b>	<b>84.33</b>

**MAHARERA NO: P99000045490 | P99000045499 | P99000045599. Details available at <https://maharera.mahaonline.gov.in>**

Disclaimer: The project Sunteck Beach Residences 1, Sunteck Beach Residences 2 & Sunteck Beach Residences 4 ("Projects") are being developed by Sunteck Real Estates Private Ltd. ("Promoter"). The layout plan, the number of buildings / villas / towers / wings / structures and or flat layout, unit areas, the common areas, facilities and amenities, information, pictures, images, drawings, specifications, sketches and other details herein are merely creative imagination and an Architect's representation of proposed development which are only illustrative/indicative in nature. The Specifications, amenities and facilities will be as set out in the Agreement for Sale and on the RERA website under Registration No. P99000045490 | P99000045499 | P99000045599. Details available at <https://maharera.mahaonline.gov.in>. The plans and the location of the amenities may be subject to modification/change/revision/alteration in terms of approvals, orders, directions and/or regulations of the concerned/competent authorities, and/or for compliance with laws/regulations in force from time to time. The common areas and common amenities for the entire layout shall be made available for the entire project and will be completed and handed over after completion of the development of the entire Sunteck Beach Residences layout. The layout will have additional towers and each of building in the layout will have additional floors upto 30 floors or such upper floors as may be approved by competent authority & details of such proposed/ additional FSI & amended plans will be uploaded on RERA web site from time to time. The podium and parking displayed are proposed & intended development subject to changes in plan and subject to approval of competent authorities. The approved villas (as per current plan) are a separate part of the layout and will have independent ingress/egress from the internal layout roads. The proposed additional villas are part of future development subject to the approval of competent authorities. The proposed club and hotel are not part of common amenity of the layout and are additional facilities (that can be availed by the residents of the layout as per applicable terms & conditions for their use) on the plot appurtenant to the layout. The proposed road network around the layout is as per DP and not part of the Development of the layout. The adjoining plot is reserved for playground as per current applicable DCR. The proposed MHADA housing on adjacent plot / reservation, the future development (mixed use, including commercial, office, retail) as shown in the layout are proposed and are subject to modification and change as per the approval of competent authorities. The modification/alteration will be by following due procedure as prescribed under the Real Estate (Regulation and Development) Act, 2016, ("RERA") read with the provisions of the Maharashtra Real Estate (Regulation and Development) (Registration of real estate projects, Registration of real estate agents, rates of interest and disclosures on website) Rules, 2017 and the Rules and Regulations framed under RERA for Maharashtra ("RERA Rules") and the relevant applicable disclosures shall be made at an appropriate time. This electronic/printed material does not constitute any offer and/or contract of any type between the Promoter and the recipient.





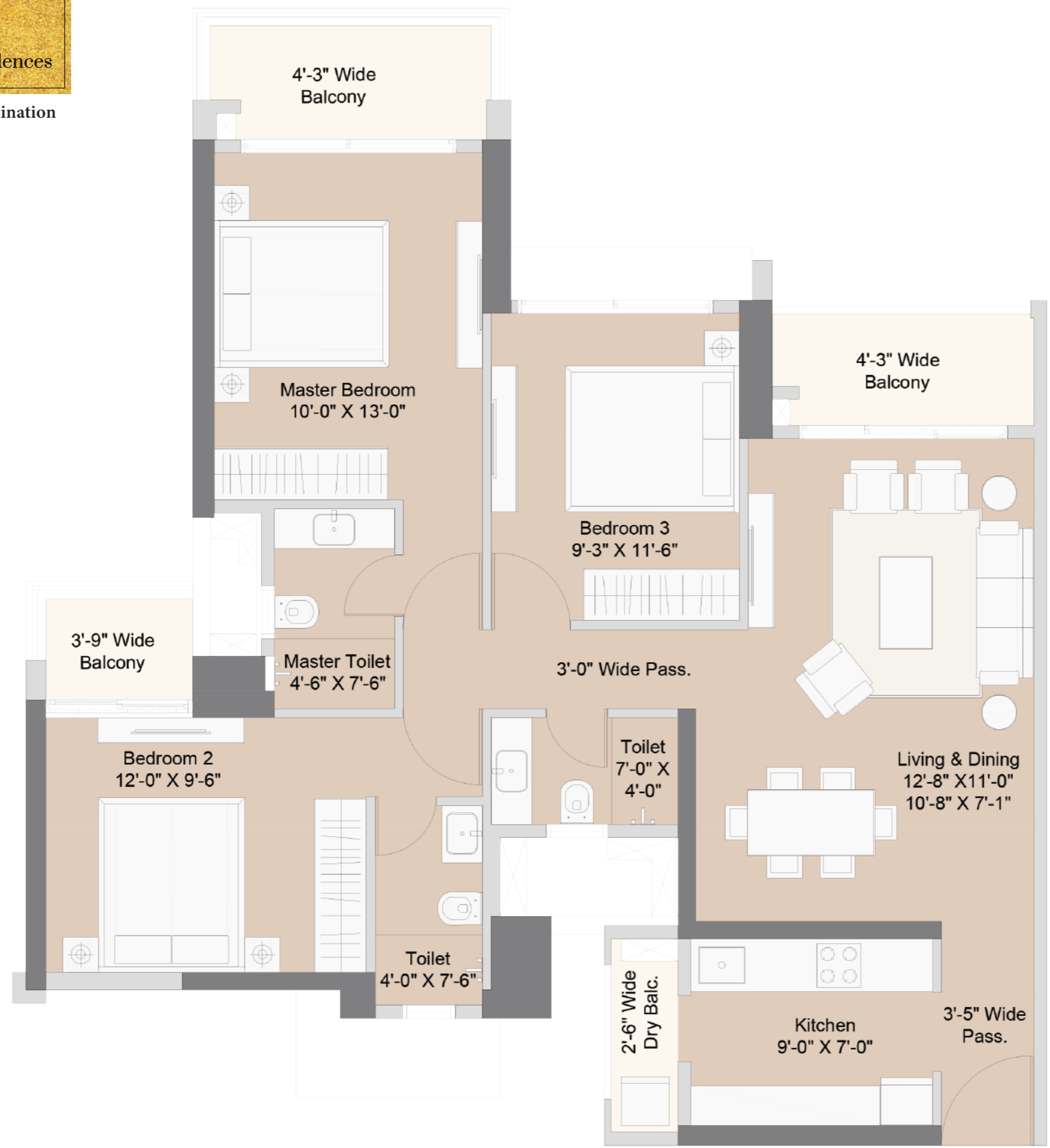
**TOWERS (A1, A2)**

3BHK Type - 1B	SQ. FT.	SQ. MT.
RERA Carpet	851.54	79.11
Balcony	101.18	9.40
<b>Total Area</b>	<b>952.72</b>	<b>88.51</b>

**MAHARERA NO: P99000045490 | P99000045499 | P99000045599. Details available at <https://maharera.mahaonline.gov.in>**

Disclaimer: The project Sunteck Beach Residences 1, Sunteck Beach Residences 2 & Sunteck Beach Residences 4 ("Projects") are being developed by Sunteck Real Estates Private Ltd. ("Promoter"). The layout plan, the number of buildings / villas / towers / wings / structures and or flat layout, unit areas, the common areas, facilities and amenities, information, pictures, images, drawings, specifications, sketches and other details herein are merely creative imagination and an Architect's representation of proposed development which are only illustrative/indicative in nature. The Specifications, amenities and facilities will be as set out in the Agreement for Sale and on the RERA website under Registration No. P99000045490 | P99000045499 | P99000045599. Details available at <https://maharera.mahaonline.gov.in>. The plans and the location of the amenities may be subject to modification/change/revision/alteration in terms of approvals, orders, directions and/or regulations of the concerned/competent authorities, and/or for compliance with laws/regulations in force from time to time. The common areas and common amenities for the entire project shall be made available for the entire project and will be completed and handed over after completion of the development of the entire Sunteck Beach Residences layout. The layout will have additional towers and each of building in the layout will have additional floors upto 30 floors or such upper floors as may be approved by competent authority & details of such proposed/ additional FSI & amended plans will be uploaded on RERA web site from time to time. The podium and parking displayed are proposed & intended development subject to changes in plan and subject to approval of competent authorities. The approved villas (as per current plan) are a separate part of the layout and will have independent ingress/egress from the internal layout roads. The proposed additional villas are part of future development subject to the approval of competent authorities. The proposed club and hotel are not part of common amenity of the layout and are additional facilities (that can be availed by the residents of the layout as per applicable terms & conditions for their use) on the plot appurtenant to the layout. The proposed road network around the layout is as per DP and not part of the Development of the layout. The adjoining plot is reserved for playground as per current applicable DCR. The proposed MHADA housing on adjacent plot / reservation, the future development (mixed use, including commercial, office, retail) as shown in the layout are proposed and are subject to modification and change as per the approval of competent authorities. The modification/alteration will be by following due procedure as prescribed under the Real Estate (Regulation and Development) Act, 2016, ("RERA") read with the provisions of the Maharashtra Real Estate (Regulation and Development) (Registration of real estate projects, Registration of real estate agents, rates of interest and disclosures on website) Rules, 2017 and the Rules and Regulations framed under RERA for Maharashtra ("RERA Rules") and the relevant applicable disclosures shall be made at an appropriate time. This electronic/printed material does not constitute any offer and/or contract of any type between the Promoter and the recipient.





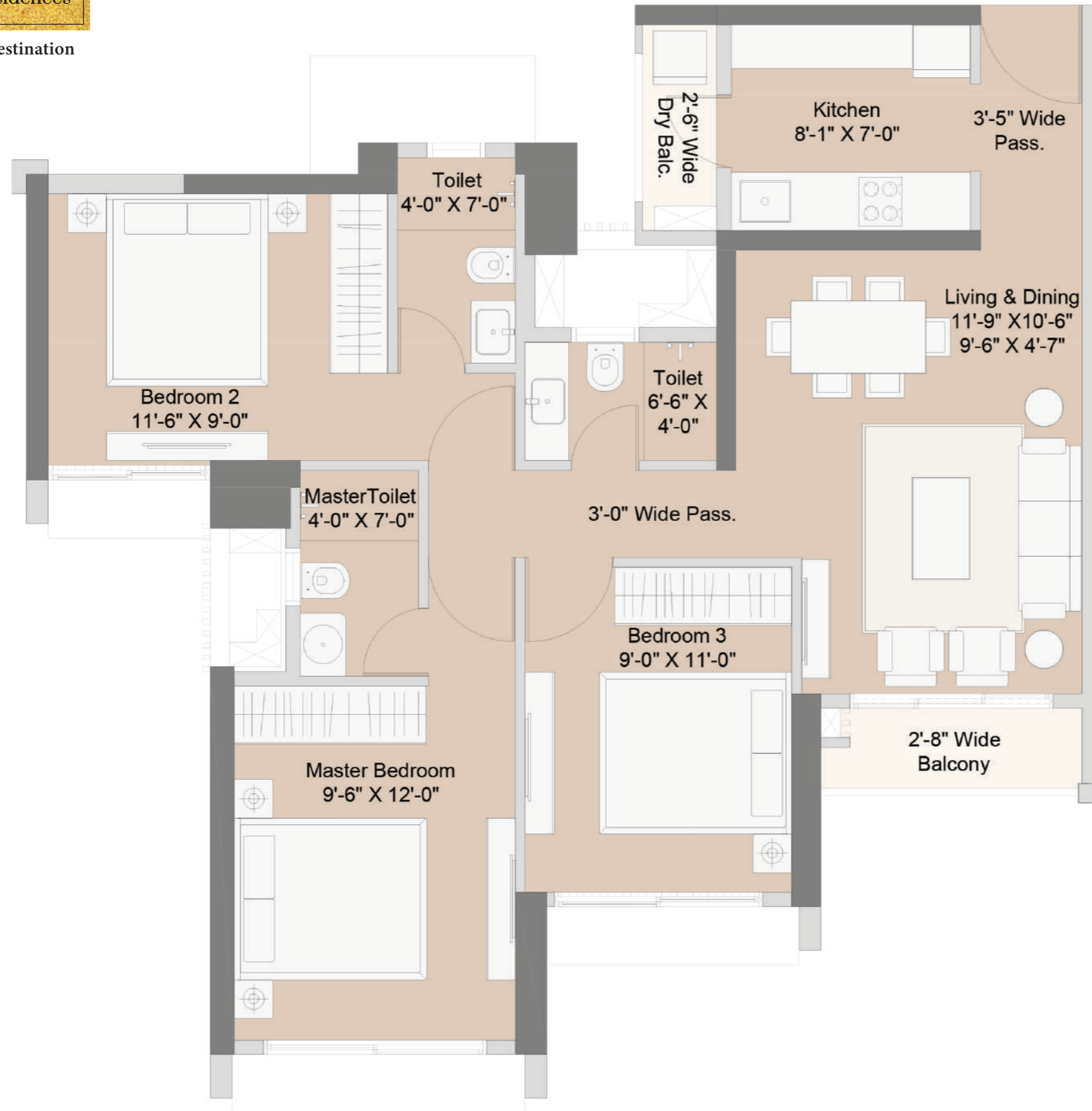
**TOWERS (A1, A2)**

3BHK Type - 1C	SQ. FT.	SQ. MT.
RERA Carpet	862.29	80.11
Balcony	117.65	10.93
<b>Total Area</b>	<b>979.94</b>	<b>91.04</b>

**MAHARERA NO: P99000045490 | P99000045499 | P99000045599. Details available at <https://maharera.mahaonline.gov.in>**

Disclaimer: The project Sunteck Beach Residences 1, Sunteck Beach Residences 2 & Sunteck Beach Residences 4 ("Projects") are being developed by Sunteck Real Estates Private Ltd. ("Promoter"). The layout plan, the number of buildings / villas / towers / wings / structures and or flat layout, unit areas, the common areas, facilities and amenities, information, pictures, images, drawings, specifications, sketches and other details herein are merely creative imagination and an Architect's representation of proposed development which are only illustrative/indicative in nature. The Specifications, amenities and facilities will be as set out in the Agreement for Sale and on the RERA website under Registration No. P99000045490 | P99000045499 | P99000045599. Details available at <https://maharera.mahaonline.gov.in>. The plans and the location of the amenities may be subject to modification/change/revision/alteration in terms of approvals, orders, directions and/or regulations of the concerned/competent authorities, and/or for compliance with laws/regulations in force from time to time. The common areas and common amenities for the entire layout shall be made available for the entire project and will be completed and handed over after completion of the development of the entire Sunteck Beach Residences layout. The layout will have additional towers and each of building in the layout will have additional floors upto 30 floors or such upper floors as may be approved by competent authority & details of such proposed/ additional FSI & amended plans will be uploaded on RERA web site from time to time. The podium and parking displayed are proposed & intended development subject to changes in plan and subject to approval of competent authorities. The approved villas (as per current plan) are a separate part of the layout and will have independent ingress/egress from the internal layout roads. The proposed additional villas are part of future development subject to the approval of competent authorities. The proposed club and hotel are not part of common amenity of the layout and are additional facilities (that can be availed by the residents of the layout as per applicable terms & conditions for their use) on the plot appurtenant to the layout. The proposed road network around the layout is as per DP and not part of the Development of the layout. The adjoining plot is reserved for playground as per current applicable DCR. The proposed MHADA housing on adjacent plot / reservation, the future development (mixed use, including commercial, office, retail) as shown in the layout are proposed and are subject to modification and change as per the approval of competent authorities. The modification/alteration will be by following due procedure as prescribed under the Real Estate (Regulation and Development) Act, 2016, ("RERA") read with the provisions of the Maharashtra Real Estate (Regulation and Development) (Registration of real estate projects, Registration of real estate agents, rates of interest and disclosures on website) Rules, 2017 and the Rules and Regulations framed under RERA for Maharashtra ("RERA Rules") and the relevant applicable disclosures shall be made at an appropriate time. This electronic/printed material does not constitute any offer and/or contract of any type between the Promoter and the recipient.





**TOWERS (A1, A2)**

3BHK Type - 2A	SQ. FT.	SQ. MT.
RERA Carpet	746.16	69.32
Balcony	39.29	3.65
<b>Total Area</b>	<b>785.45</b>	<b>72.97</b>

**MAHARERA NO: P99000045490 | P99000045499 | P99000045599. Details available at <https://maharera.mahaonline.gov.in>**

Disclaimer: The project Sunteck Beach Residences 1, Sunteck Beach Residences 2 & Sunteck Beach Residences 4 ("Projects") are being developed by Sunteck Real Estates Private Ltd. ("Promoter"). The layout plan, the number of buildings / villas / towers / wings / structures and or flat layout, unit areas, the common areas, facilities and amenities, information, pictures, images, drawings, specifications, sketches and other details herein are merely creative imagination and an Architect's representation of proposed development which are only illustrative/indicative in nature. The Specifications, amenities and facilities will be as set out in the Agreement for Sale and on the RERA website under Registration No. P99000045490 | P99000045499 | P99000045599. Details available at <https://maharera.mahaonline.gov.in>. The plans and the location of the amenities may be subject to modification/change/revision/alteration in terms of approvals, orders, directions and/or regulations of the concerned/competent authorities, and/or for compliance with laws/regulations in force from time to time. The common areas and common amenities for the entire layout shall be made available for the entire project and will be completed and handed over after completion of the development of the entire Sunteck Beach Residences layout. The layout will have additional towers and each of building in the layout will have additional floors upto 30 floors or such upper floors as may be approved by competent authority & details of such proposed/ additional FSI & amended plans will be uploaded on RERA web site from time to time. The podium and parking displayed are proposed & intended development subject to changes in plan and subject to approval of competent authorities. The approved villas (as per current plan) are a separate part of the layout and will have independent ingress/egress from the internal layout roads. The proposed additional villas are part of future development subject to the approval of competent authorities. The proposed club and hotel are not part of common amenity of the layout and are additional facilities (that can be availed by the residents of the layout as per applicable terms & conditions for their use) on the plot appurtenant to the layout. The proposed road network around the layout is as per DP and not part of the Development of the layout. The adjoining plot is reserved for playground as per current applicable DCR. The proposed MHADA housing on adjacent plot / reservation, the future development (mixed use, including commercial, office, retail) as shown in the layout are proposed and are subject to modification and change as per the approval of competent authorities. The modification/alteration will be by following due procedure as prescribed under the Real Estate (Regulation and Development) Act, 2016, ("RERA") read with the provisions of the Maharashtra Real Estate (Regulation and Development) (Registration of real estate projects, Registration of real estate agents, rates of interest and disclosures on website) Rules, 2017 and the Rules and Regulations framed under RERA for Maharashtra ("RERA Rules") and the relevant applicable disclosures shall be made at an appropriate time. This electronic/printed material does not constitute any offer and/or contract of any type between the Promoter and the recipient.



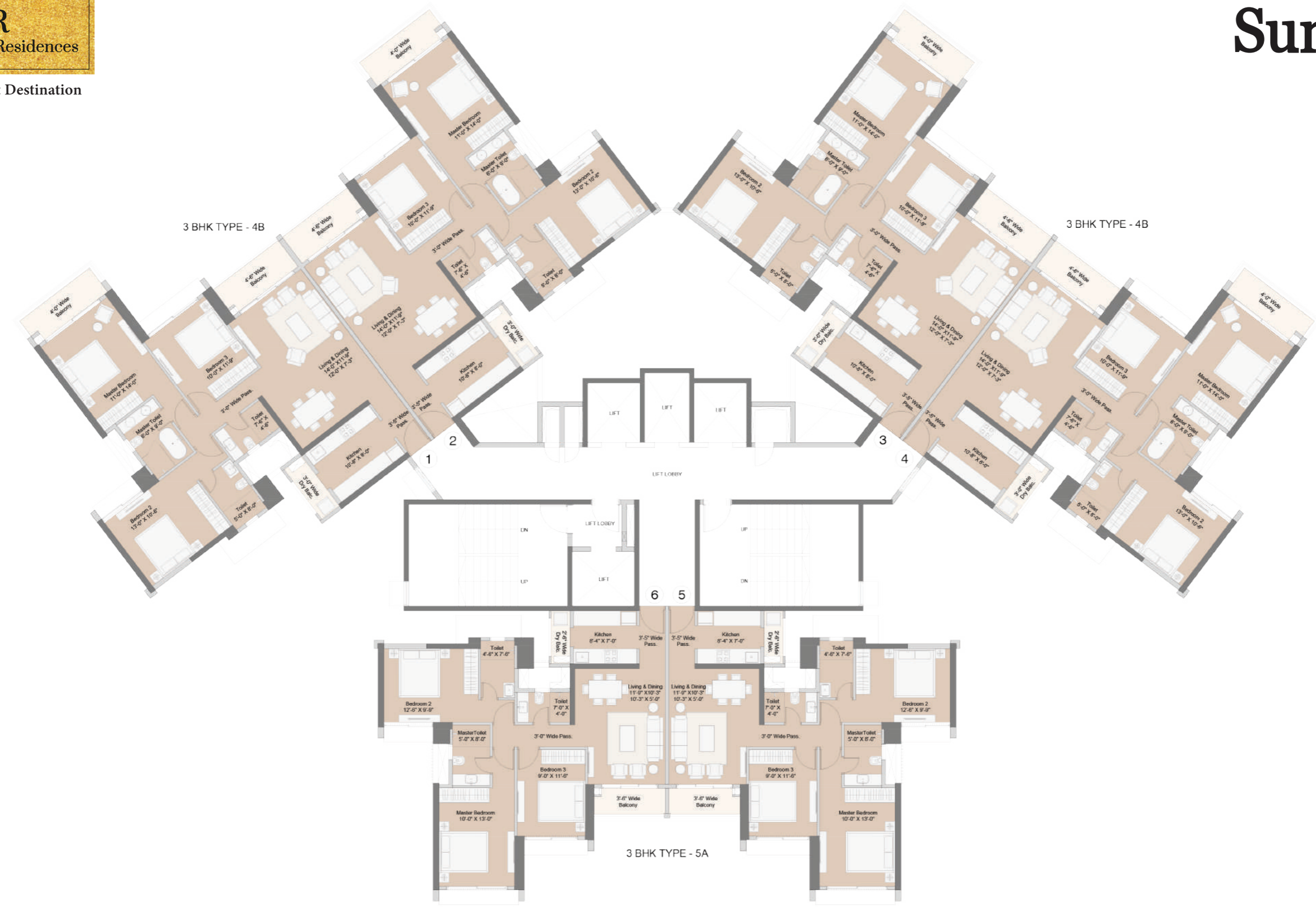


**TYPICAL FLOOR PLAN  
TOWERS – A3 (6<sup>TH</sup> TO 22<sup>ND</sup> FLOOR)**

Note: Units 5 & 6 on floors 7, 12, 17, 22, 27, 32 are on hold. Refer inventory list for refuge units & refuge adjacent units on above mentioned floor.

MAHARERA NO: P99000045490 | P99000045499 | P99000045599. Details available at <https://maharera.mahaonline.gov.in>





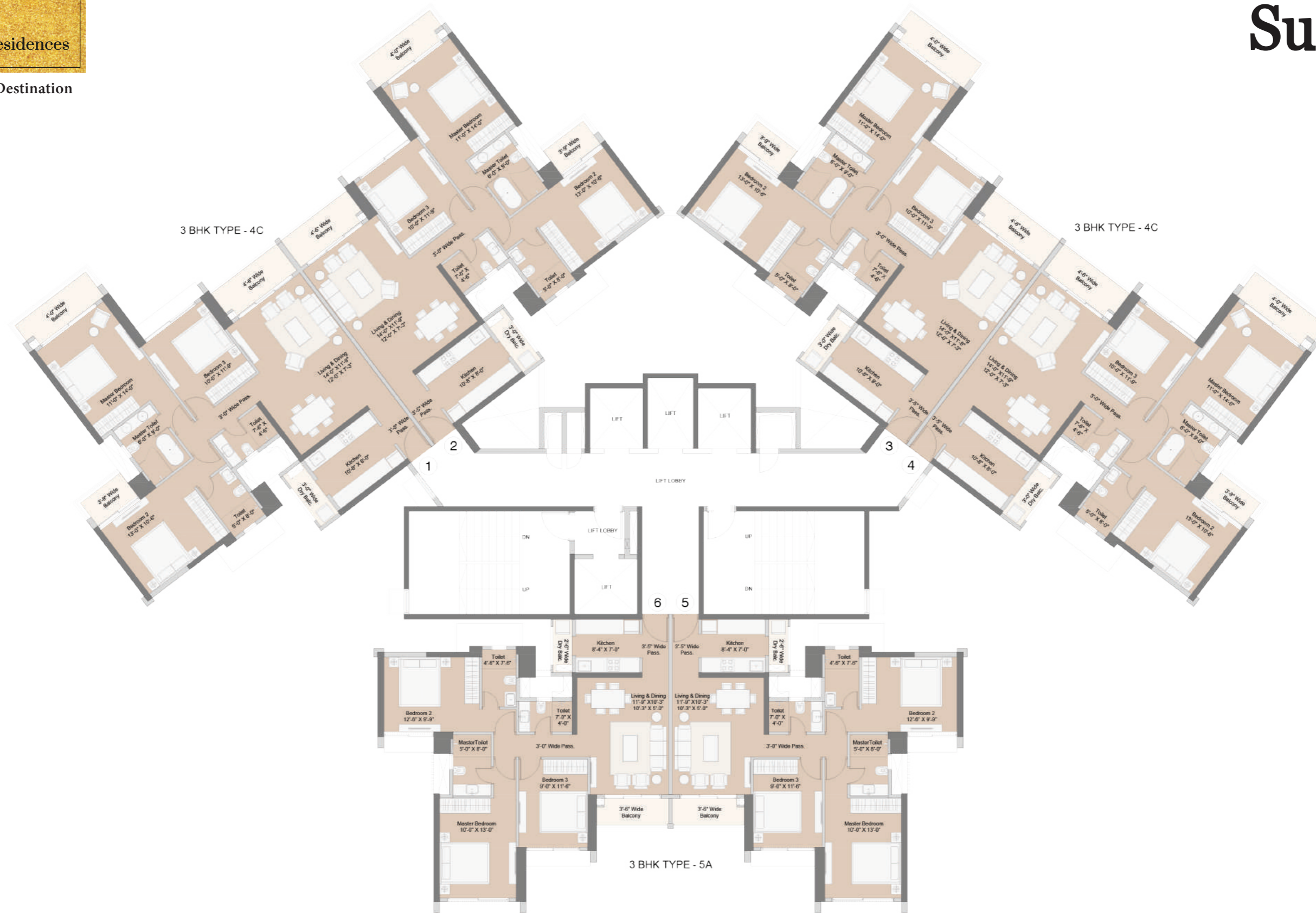
**TYPICAL FLOOR PLAN  
TOWERS – A3 (23<sup>RD</sup> TO 30<sup>TH</sup> FLOOR)**

Note: Units 5 & 6 on floors 7, 12, 17, 22, 27, 32 are on hold. Refer inventory list for refuge units & refuge adjacent units on above mentioned floor.

MAHARERA NO: P99000045490 | P99000045499 | P99000045599. Details available at <https://maharera.mahaonline.gov.in>

Disclaimer: The project Sunteck Beach Residences 1, Sunteck Beach Residences 2 & Sunteck Beach Residences 4 ("Projects") are being developed by Sunteck Real Estates Private Ltd. ("Promoter"). The layout plan, the number of buildings / villas / towers / wings / structures or flat layout, unit areas, the common areas, facilities and amenities, information, pictures, images, drawings, specifications, sketches and other details herein are merely creative imagination and an Architect's representation of proposed development which are only illustrative/indicative in nature. The Specifications, amenities and facilities will be as set out in the Agreement for Sale and on the RERA website under Registration No. P99000045490 | P99000045499 | P99000045599. Details available at <https://maharera.mahaonline.gov.in>. The plans and the location of the amenities may be subject to modification/change/revision/alteration in terms of approvals, orders, directions and/or regulations of the concerned/competent authorities, and/or in compliance with laws/regulations in force from time to time. The common areas and common amenities for the entire layout shall be made available for the entire project and will be completed and handed over after completion of the development of the entire Sunteck Beach Residences layout. The layout will have additional towers and each of building in the layout will have additional floors upto 30 floors or such upper floors as may be approved by competent authority & details of such proposed/ additional FSI & amended plans will be uploaded on RERA web site from time to time. The podium and parking displayed are proposed & intended development subject to changes in plan and subject to approval of competent authorities. The approved villas (as per current plan) are a separate part of the layout and will have independent ingress/egress from the internal layout roads. The proposed additional villas are part of future development subject to the approval of competent authorities. The proposed club and hotel are not part of common amenity of the layout and are additional facilities (that can be availed by the residents of the layout as per applicable terms & conditions for their use) on the plot appurtenant to the layout. The proposed road network around the layout is as per DP and not part of the Development of the layout. The adjoining plot is reserved for playground as per current applicable DCR. The proposed MHADA housing on adjacent plot / reservation, the future development (mixed use, including commercial, office, retail) as shown in the layout are proposed and are subject to modification and change as per the approval of competent authorities. The modification/alteration will be by following due procedure as prescribed under the Real Estate (Regulation and Development) Act, 2016, ("RERA") read with the provisions of the Maharashtra Real Estate (Regulation and Development) (Registration of real estate projects, Registration of real estate agents, rates of interest and disclosures on website) Rules, 2017 and the Rules and Regulations framed under RERA for Maharashtra ("RERA Rules") and the relevant applicable disclosures shall be made at an appropriate time. This electronic/printed material does not constitute any offer and/or contract of any type between the Promoter and the recipient.



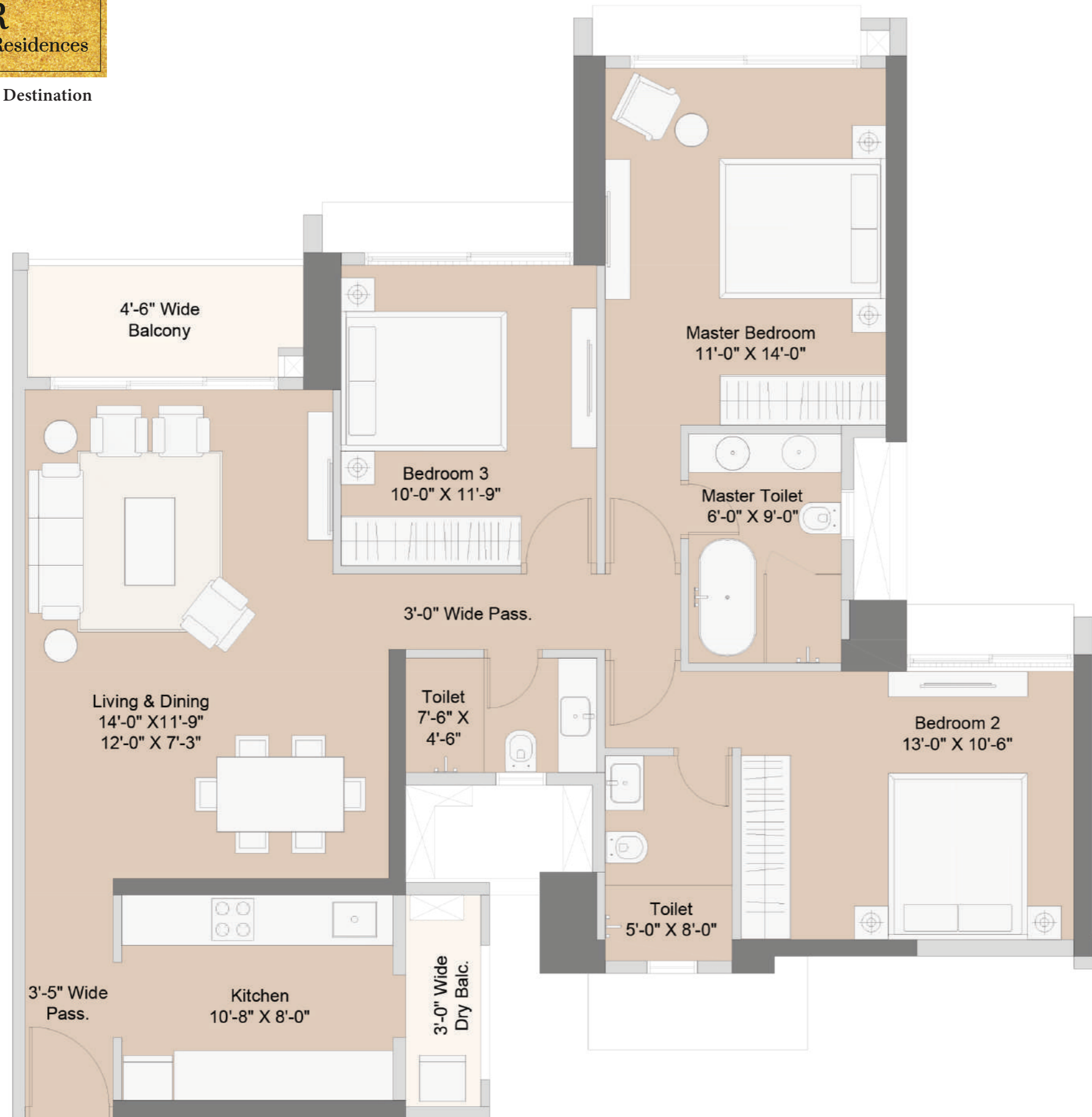


**TYPICAL FLOOR PLAN  
TOWERS – A3 (31<sup>ST</sup> TO 35<sup>TH</sup> FLOOR)**

Note: Units 5 & 6 on floors 7, 12, 17, 22, 27, 32 are on hold. Refer inventory list for refuge units & refuge adjacent units on above mentioned floor.

MAHARERA NO: P99000045490 | P99000045499 | P99000045599. Details available at <https://maharera.mahaonline.gov.in>





**TOWERS (A3)**

3BHK Type - 4A	SQ. FT.	SQ. MT.
RERA Carpet	1031.84	95.86
Balcony	70.94	6.59
<b>Total Area</b>	<b>1102.78</b>	<b>102.45</b>

MAHARERA NO: P99000045490 | P99000045499 | P99000045599. Details available at <https://maharera.mahaonline.gov.in>

Disclaimer: The project Sunteck Beach Residences 1, Sunteck Beach Residences 2 & Sunteck Beach Residences 4 ("Projects") are being developed by Sunteck Real Estates Private Ltd. ("Promoter"). The layout plan, the number of buildings / villas / towers / wings / structures and or flat layout, unit areas, the common areas, facilities and amenities, information, pictures, images, drawings, specifications, sketches and other details herein are merely creative imagination and an Architect's representation of proposed development which are only illustrative/indicative in nature. The Specifications, amenities and facilities will be as set out in the Agreement for Sale and on the RERA website under Registration No. P99000045490 | P99000045499 | P99000045599. Details available at <https://maharera.mahaonline.gov.in>. The plans and the location of the amenities may be subject to modification/change/revision/alteration in terms of approvals, orders, directions and/or regulations of the concerned/competent authorities, and/or for compliance with laws/regulations in force from time to time. The common areas and common amenities for the entire layout shall be made available for the entire project and will be completed and handed over after completion of the development of the entire Sunteck Beach Residences layout. The layout will have additional towers and each of building in the layout will have additional floors upto 30 floors or such upper floors as may be approved by competent authority & details of such proposed/ additional FSI & amended plans will be uploaded on RERA web site from time to time. The podium and parking displayed are proposed & intended development subject to changes in plan and subject to approval of competent authorities. The approved villas (as per current plan) are a separate part of the layout and will have independent ingress/egress from the internal layout roads. The proposed additional villas are part of future development subject to the approval of competent authorities. The proposed club and hotel are not part of common amenity of the layout and are additional facilities (that can be availed by the residents of the layout as per applicable terms & conditions for their use) on the plot appurtenant to the layout. The proposed road network around the layout is as per DP and not part of the Development of the layout. The adjoining plot is reserved for playground as per current applicable DCR. The proposed MHADA housing on adjacent plot / reservation, the future development (mixed use, including commercial, office, retail) as shown in the layout are proposed and are subject to modification and change as per the approval of competent authorities. The modification/alteration will be by following due procedure as prescribed under the Real Estate (Regulation and Development) Act, 2016, ("RERA") read with the provisions of the Maharashtra Real Estate (Regulation and Development) (Registration of real estate projects, Registration of real estate agents, rates of interest and disclosures on website) Rules, 2017 and the Rules and Regulations framed under RERA for Maharashtra ("RERA Rules") and the relevant applicable disclosures shall be made at an appropriate time. This electronic/printed material does not constitute any offer and/or contract of any type between the Promoter and the recipient.





**TOWERS (A3)**

3BHK Type - 4B	SQ. FT.	SQ. MT.
RERA Carpet	1037.11	96.35
Balcony	115.07	10.69
<b>Total Area</b>	<b>1152.18</b>	<b>107.04</b>

**MAHARERA NO: P99000045490 | P99000045499 | P99000045599. Details available at <https://maharera.mahaonline.gov.in>**

Disclaimer: The project Sunteck Beach Residences 1, Sunteck Beach Residences 2 & Sunteck Beach Residences 4 ("Projects") are being developed by Sunteck Real Estates Private Ltd. ("Promoter"). The layout plan, the number of buildings / villas / towers / wings / structures and or flat layout, unit areas, the common areas, facilities and amenities, information, pictures, images, drawings, specifications, sketches and other details herein are merely creative imagination and an Architect's representation of proposed development which are only illustrative/indicative in nature. The Specifications, amenities and facilities will be as set out in the Agreement for Sale and on the RERA website under Registration No. P99000045490 | P99000045499 | P99000045599. Details available at <https://maharera.mahaonline.gov.in>. The plans and the location of the amenities may be subject to modification/change/revision/alteration in terms of approvals, orders, directions and/or regulations of the concerned/competent authorities, and/or for compliance with laws/regulations in force from time to time. The common areas and common amenities for the entire layout shall be made available for the entire project and will be completed and handed over after completion of the development of the entire Sunteck Beach Residences layout. The layout will have additional towers and each of building in the layout will have additional floors upto 30 floors or such upper floors as may be approved by competent authority & details of such proposed/ additional FSI & amended plans will be uploaded on RERA web site from time to time. The podium and parking displayed are proposed & intended development subject to changes in plan and subject to approval of competent authorities. The approved villas (as per current plan) are a separate part of the layout and will have independent ingress/egress from the internal layout roads. The proposed additional villas are part of future development subject to the approval of competent authorities. The proposed club and hotel are not part of common amenity of the layout and are additional facilities (that can be availed by the residents of the layout as per applicable terms & conditions for their use) on the plot appurtenant to the layout. The proposed road network around the layout is as per DP and not part of the Development of the layout. The adjoining plot is reserved for playground as per current applicable DCR. The proposed MHADA housing on adjacent plot / reservation, the future development (mixed use, including commercial, office, retail) as shown in the layout are proposed and are subject to modification and change as per the approval of competent authorities. The modification/alteration will be by following due procedure as prescribed under the Real Estate (Regulation and Development) Act, 2016, ("RERA") read with the provisions of the Maharashtra Real Estate (Regulation and Development) (Registration of real estate projects, Registration of real estate agents, rates of interest and disclosures on website) Rules, 2017 and the Rules and Regulations framed under RERA for Maharashtra ("RERA Rules") and the relevant applicable disclosures shall be made at an appropriate time. This electronic/printed material does not constitute any offer and/or contract of any type between the Promoter and the recipient.





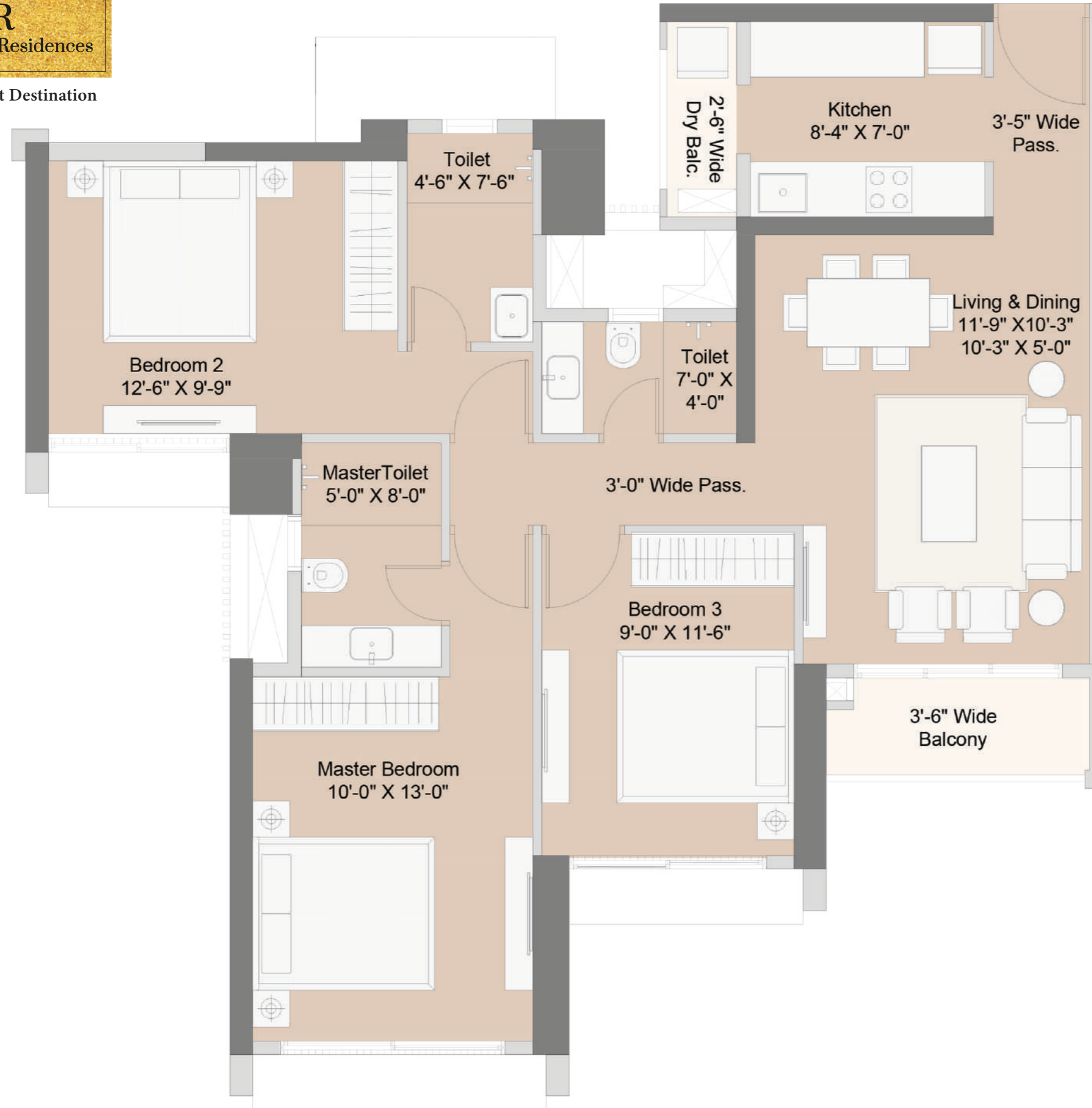
**TOWERS (A3)**

3BHK Type - 4C	SQ. FT.	SQ. MT.
RERA Carpet	1043.63	96.96
Balcony	140.22	13.03
<b>Total Area</b>	<b>1183.85</b>	<b>109.99</b>

**MAHARERA NO: P99000045490 | P99000045499 | P99000045599. Details available at <https://maharera.mahaonline.gov.in>**

Disclaimer: The project Sunteck Beach Residences 1, Sunteck Beach Residences 2 & Sunteck Beach Residences 4 ("Projects") are being developed by Sunteck Real Estates Private Ltd. ("Promoter"). The layout plan, the number of buildings / villas / towers / wings / structures and or flat layout, unit areas, the common areas, facilities and amenities, information, pictures, images, drawings, specifications, sketches and other details herein are merely creative imagination and an Architect's representation of proposed development which are only illustrative/indicative in nature. The Specifications, amenities and facilities will be as set out in the Agreement for Sale and on the RERA website under Registration No. P99000045490 | P99000045499 | P99000045599. Details available at <https://maharera.mahaonline.gov.in>. The plans and the location of the amenities may be subject to modification/change/revision/alteration in terms of approvals, orders, directions and/or regulations of the concerned/competent authorities, and/or for compliance with laws/regulations in force from time to time. The common areas and common amenities for the entire layout shall be made available for the entire project and will be completed and handed over after completion of the development of the entire Sunteck Beach Residences layout. The layout will have additional towers and each of building in the layout will have additional floors upto 30 floors or such upper floors as may be approved by competent authority & details of such proposed/ additional FSI & amended plans will be uploaded on RERA web site from time to time. The podium and parking displayed are proposed & intended development subject to changes in plan and subject to approval of competent authorities. The approved villas (as per current plan) are a separate part of the layout and will have independent ingress/egress from the internal layout roads. The proposed additional villas are part of future development subject to the approval of competent authorities. The proposed club and hotel are not part of common amenity of the layout and are additional facilities (that can be availed by the residents of the layout as per applicable terms & conditions for their use) on the plot appurtenant to the layout. The proposed road network around the layout is as per DP and not part of the Development of the layout. The adjoining plot is reserved for playground as per current applicable DCR. The proposed MHADA housing on adjacent plot / reservation, the future development (mixed use, including commercial, office, retail) as shown in the layout are proposed and are subject to modification and change as per the approval of competent authorities. The modification/alteration will be by following due procedure as prescribed under the Real Estate (Regulation and Development) Act, 2016, ("RERA") read with the provisions of the Maharashtra Real Estate (Regulation and Development) (Registration of real estate projects, Registration of real estate agents, rates of interest and disclosures on website) Rules, 2017 and the Rules and Regulations framed under RERA for Maharashtra ("RERA Rules") and the relevant applicable disclosures shall be made at an appropriate time. This electronic/printed material does not constitute any offer and/or contract of any type between the Promoter and the recipient.





**TOWERS (A3)**

3BHK Type - 5A	SQ. FT.	SQ. MT.
RERA Carpet	826.68	76.80
Balcony	48.11	4.47
<b>Total Area</b>	<b>874.79</b>	<b>81.27</b>

MAHARERA NO: P99000045490 | P99000045499 | P99000045599. Details available at <https://maharera.mahaonline.gov.in>

Disclaimer: The project Sunteck Beach Residences 1, Sunteck Beach Residences 2 & Sunteck Beach Residences 4 ("Projects") are being developed by Sunteck Real Estates Private Ltd. ("Promoter"). The layout plan, the number of buildings / villas/ towers / wings / structures and or flat layout, unit areas, the common areas, facilities and amenities, information, pictures, images, drawings, specifications, sketches and other details herein are merely creative imagination and an Architect's representation of proposed development which are only illustrative/indicative in nature. The Specifications, amenities and facilities will be as set out in the Agreement for Sale and on the RERA website under Registration No. P99000045490 | P99000045499 | P99000045599. Details available at <https://maharera.mahaonline.gov.in>. The plans and the location of the amenities may be subject to modification/change/revision/alteration in terms of approvals, orders, directions and/or regulations of the concerned/competent authorities, and/or for compliance with laws/regulations in force from time to time. The common areas and common amenities for the entire project shall be made available for the entire project and will be completed and handed over after completion of the development of the entire Sunteck Beach Residences layout. The layout will have additional towers and each of building in the layout will have additional floors upto 30 floors or such upper floors as may be approved by competent authority & details of such proposed/ additional FSI & amended plans will be uploaded on RERA web site from time to time. The podium and parking displayed are proposed & intended development subject to changes in plan and subject to approval of competent authorities. The approved villas (as per current plan) are a separate part of the layout and will have independent ingress/egress from the internal layout roads. The proposed additional villas are part of future development subject to the approval of competent authorities. The proposed club and hotel are not part of common amenity of the layout and are additional facilities (that can be availed by the residents of the layout as per applicable terms & conditions for their use) on the plot appurtenant to the layout. The proposed road network around the layout is as per DP and not part of the Development of the layout. The adjoining plot is reserved for playground as per current applicable DCR. The proposed MHADA housing on adjacent plot / reservation, the future development (mixed use, including commercial, office, retail) as shown in the layout are proposed and are subject to modification and change as per the approval of competent authorities. The modification/alteration will be by following due procedure as prescribed under the Real Estate (Regulation and Development) Act, 2016, ("RERA") read with the provisions of the Maharashtra Real Estate (Regulation and Development) (Registration of real estate projects, Registration of real estate agents, rates of interest and disclosures on website) Rules, 2017 and the Rules and Regulations framed under RERA for Maharashtra ("RERA Rules") and the relevant applicable disclosures shall be made at an appropriate time. This electronic/printed material does not constitute any offer and/or contract of any type between the Promoter and the recipient.





**TYPICAL FLOOR PLAN  
TOWERS – B1, B2, B3 (6<sup>TH</sup> TO 14<sup>TH</sup> FLOOR)**

Note: Refuge units & refuge adjacent units on floors- 8, 13, 18, 23, 28, 33 are on hold. Refer inventory list for the unit numbers on hold.

MAHARERA NO: P99000045490 | P99000045499 | P99000045599. Details available at <https://maharera.mahaonline.gov.in>



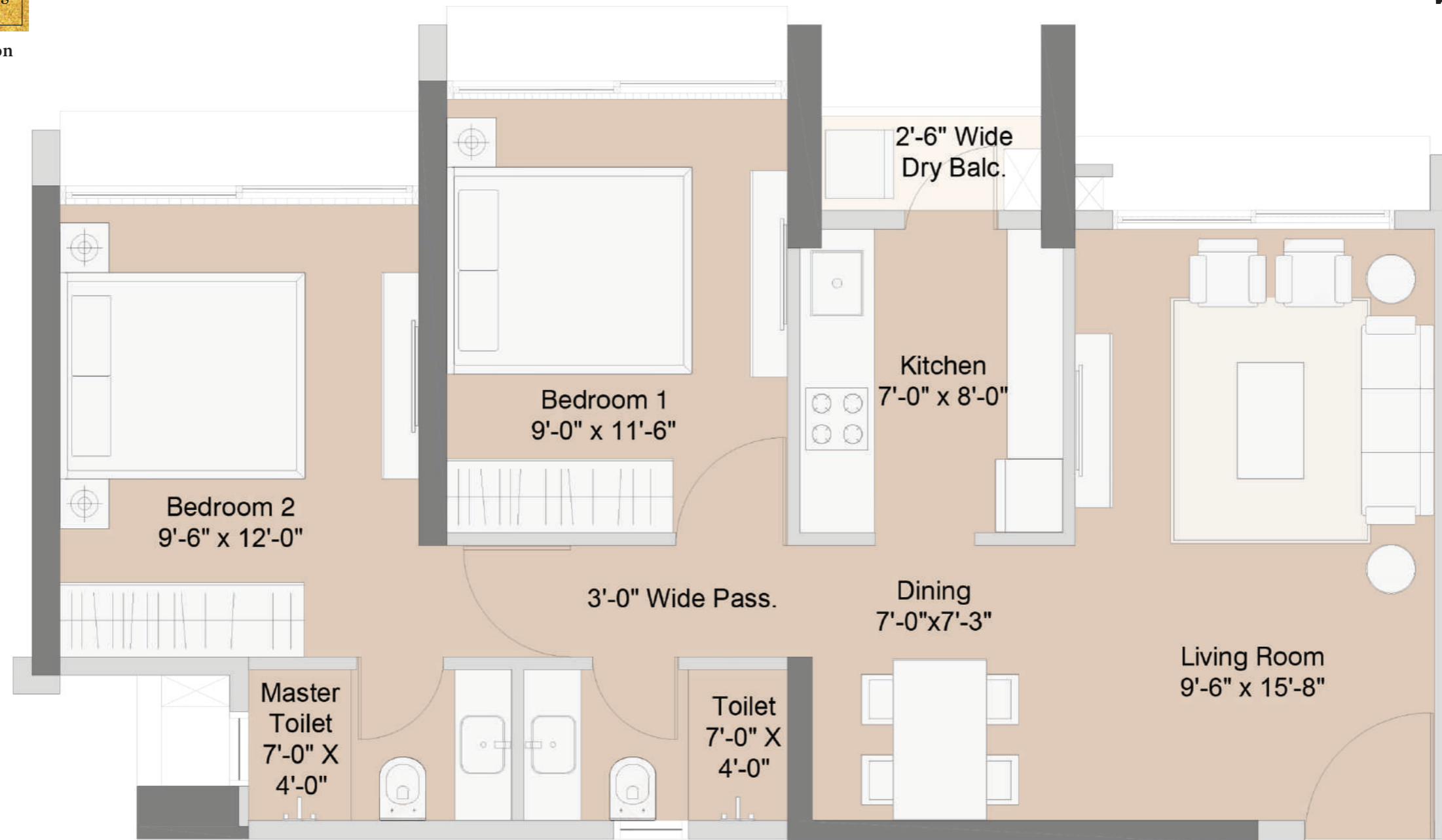


**TYPICAL FLOOR PLAN  
TOWERS – B1, B2, B3 (15<sup>TH</sup> TO 35<sup>TH</sup> FLOOR)**

Note: Refuge units & refuge adjacent units on floors- 8, 13, 18, 23, 28, 33 are on hold. Refer inventory list for the unit numbers on hold.

MAHARERA NO: P99000045490 | P99000045499 | P99000045599. Details available at <https://maharera.mahaonline.gov.in>





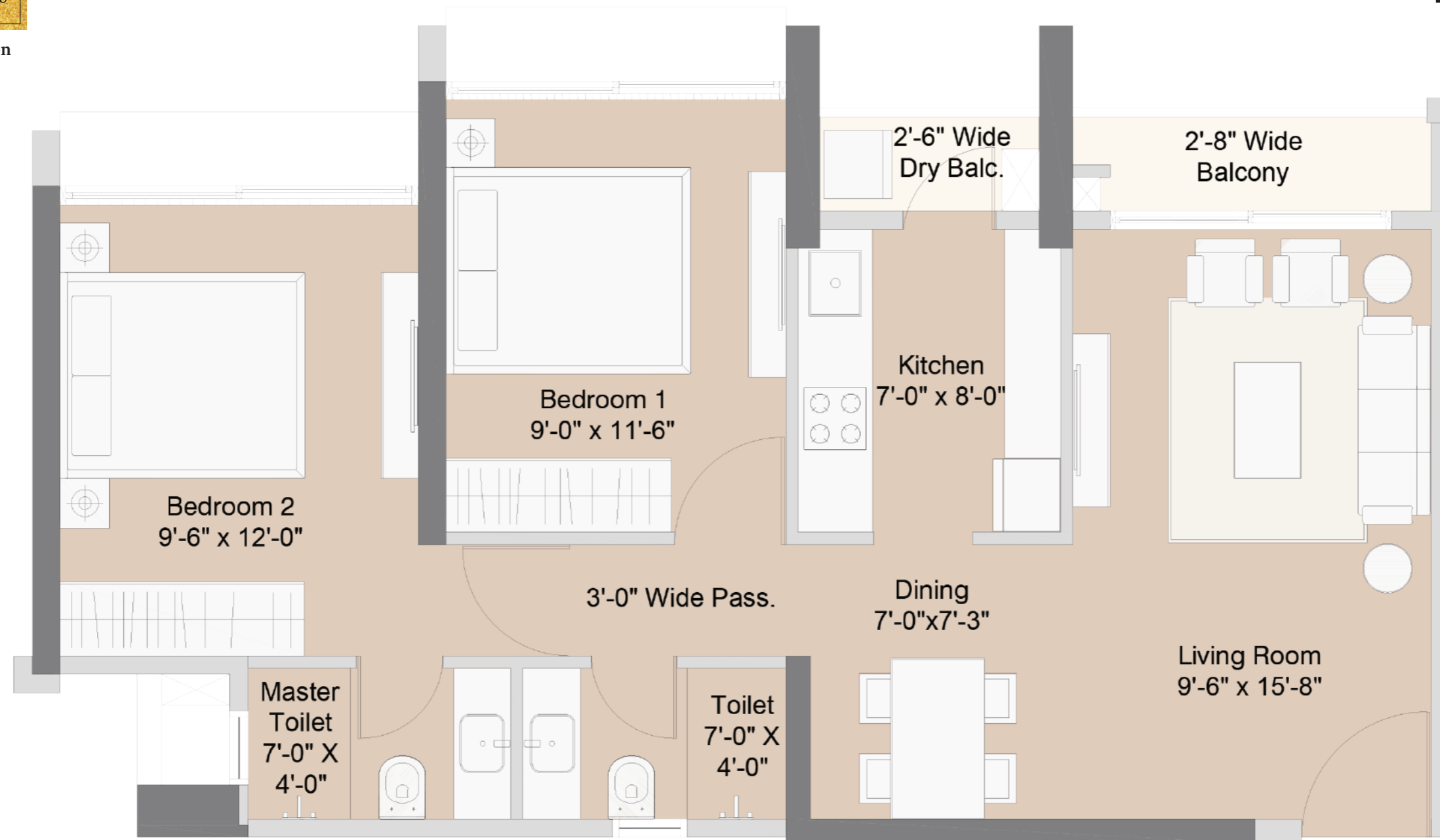
**TOWERS (B1, B2, B3)**

2BHK Type - 1	SQ. FT.	SQ. MT.
RERA Carpet	591.59	54.96
Balcony	12.49	1.16
<b>Total Area</b>	<b>604.08</b>	<b>56.12</b>

**MAHARERA NO: P99000045490 | P99000045499 | P99000045599. Details available at <https://maharera.mahaonline.gov.in>**

Disclaimer: The project Sunteck Beach Residences 1, Sunteck Beach Residences 2 & Sunteck Beach Residences 4 ("Projects") are being developed by Sunteck Real Estates Private Ltd. ("Promoter"). The layout plan, the number of buildings / villas/ towers / wings / structures and or flat layout, unit areas, the common areas, facilities and amenities, information, pictures, images, drawings, specifications, sketches and other details herein are merely creative imagination and an Architect's representation of proposed development which are only illustrative/indicative in nature. The Specifications, amenities and facilities will be as set out in the Agreement for Sale and on the RERA website under Registration No. P99000045490 | P99000045499 | P99000045599. Details available at <https://maharera.mahaonline.gov.in>. The plans and the location of the amenities may be subject to modification/change/revision/alteration in terms of approvals, orders, directions and/or regulations of the concerned/competent authorities, and/or for compliance with laws/regulations in force from time to time. The common areas and common amenities for the entire layout shall be made available for the entire project and will be completed and handed over after completion of the development of the entire Sunteck Beach Residences layout. The layout will have additional towers and each of building in the layout will have additional floors upto 30 floors or such upper floors as may be approved by competent authority & details of such proposed/ additional FSI & amended plans will be uploaded on RERA web site from time to time. The podium and parking displayed are proposed & intended development subject to changes in plan and subject to approval of competent authorities. The approved villas (as per current plan) are a separate part of the layout and will have independent ingress/egress from the internal layout roads. The proposed additional villas are part of future development subject to the approval of competent authorities. The proposed club and hotel are not part of common amenity of the layout and are additional facilities (that can be availed by the residents of the layout as per applicable terms & conditions for their use) on the plot appurtenant to the layout. The proposed road network around the layout is as per DP and not part of the Development of the layout. The adjoining plot is reserved for playground as per current applicable DCR. The proposed MHADA housing on adjacent plot / reservation, the future development (mixed use, including commercial, office, retail) as shown in the layout are proposed and are subject to modification and change as per the approval of competent authorities. The modification/alteration will be by following due procedure as prescribed under the Real Estate (Regulation and Development) Act, 2016, ("RERA") read with the provisions of the Maharashtra Real Estate (Regulation and Development) (Registration of real estate projects, Registration of real estate agents, rates of interest and disclosures on website) Rules, 2017 and the Rules and Regulations framed under RERA for Maharashtra ("RERA Rules") and the relevant applicable disclosures shall be made at an appropriate time. This electronic/printed material does not constitute any offer and/or contract of any type between the Promoter and the recipient.





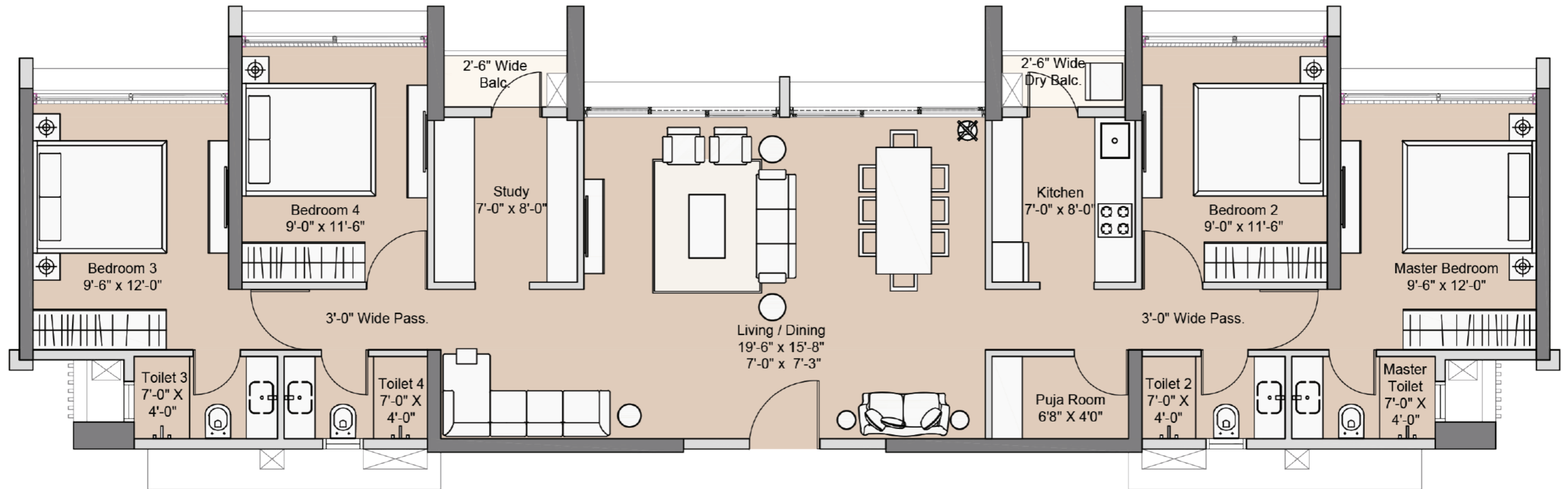
**TOWERS (B1, B2, B3)**

2BHK Type - 1	SQ. FT.	SQ. MT.
RERA Carpet	596.22	55.39
Balcony	38.21	3.55
<b>Total Area</b>	<b>634.43</b>	<b>58.94</b>

**MAHARERA NO: P99000045490 | P99000045499 | P99000045599. Details available at <https://maharera.mahaonline.gov.in>**

Disclaimer: The project Sunteck Beach Residences 1, Sunteck Beach Residences 2 & Sunteck Beach Residences 4 ("Projects") are being developed by Sunteck Real Estates Private Ltd. ("Promoter"). The layout plan, the number of buildings / villas/ towers / wings / structures and or flat layout, unit areas, the common areas, facilities and amenities, information, pictures, images, drawings, specifications, sketches and other details herein are merely creative imagination and an Architect's representation of proposed development which are only illustrative/indicative in nature. The Specifications, amenities and facilities will be as set out in the Agreement for Sale and on the RERA website under Registration No. P99000045490 | P99000045499 | P99000045599. Details available at <https://maharera.mahaonline.gov.in>. The plans and the location of the amenities may be subject to modification/change/revision/alteration in terms of approvals, orders, directions and/or regulations of the concerned/competent authorities, and/or for compliance with laws/regulations in force from time to time. The common areas and common amenities for the entire layout shall be made available for the entire project and will be completed and handed over after completion of the development of the entire Sunteck Beach Residences layout. The layout will have additional towers and each of building in the layout will have additional floors upto 30 floors or such upper floors as may be approved by competent authority & details of such proposed/ additional FSI & amended plans will be uploaded on RERA web site from time to time. The podium and parking displayed are proposed & intended development subject to changes in plan and subject to approval of competent authorities. The approved villas (as per current plan) are a separate part of the layout and will have independent ingress/egress from the internal layout roads. The proposed additional villas are part of future development subject to the approval of competent authorities. The proposed club and hotel are not part of common amenity of the layout and are additional facilities (that can be availed by the residents of the layout as per applicable terms & conditions for their use) on the plot appurtenant to the layout. The proposed road network around the layout is as per DP and not part of the Development of the layout. The adjoining plot is reserved for playground as per current applicable DCR. The proposed MHADA housing on adjacent plot / reservation, the future development (mixed use, including commercial, office, retail) as shown in the layout are proposed and are subject to modification and change as per the approval of competent authorities. The modification/alteration will be by following due procedure as prescribed under the Real Estate (Regulation and Development) Act, 2016, ("RERA") read with the provisions of the Maharashtra Real Estate (Regulation and Development) (Registration of real estate projects, Registration of real estate agents, rates of interest and disclosures on website) Rules, 2017 and the Rules and Regulations framed under RERA for Maharashtra ("RERA Rules") and the relevant applicable disclosures shall be made at an appropriate time. This electronic/printed material does not constitute any offer and/or contract of any type between the Promoter and the recipient.



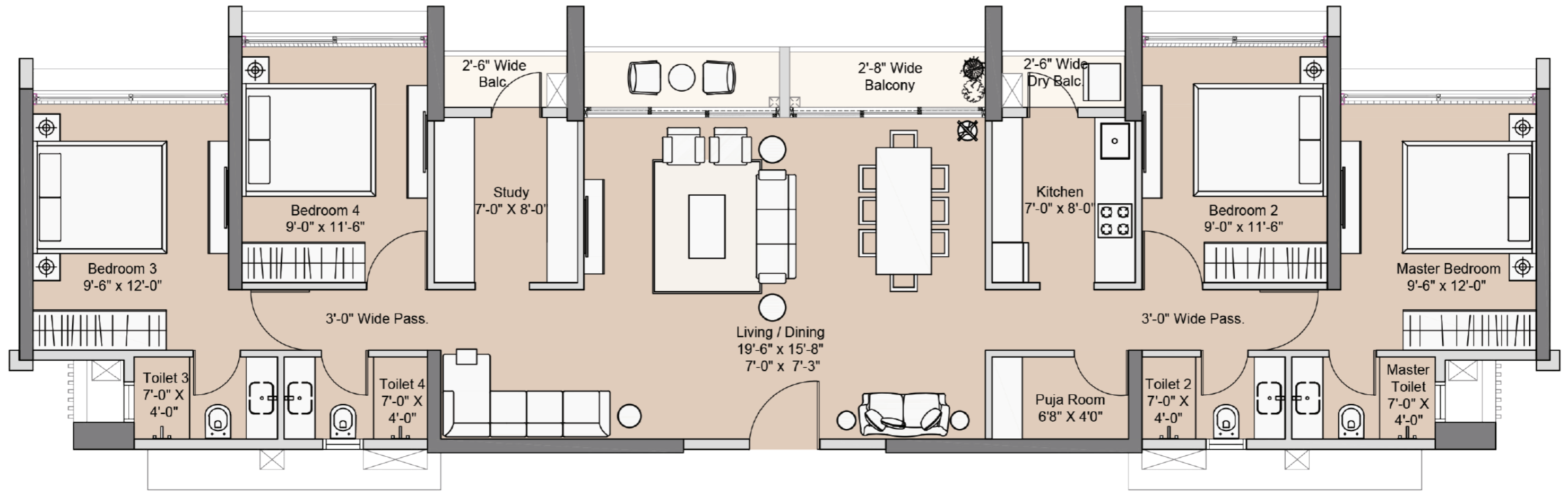


Jodi 2BHK (Type-1)	SQ. FT.	SQ. MT.
RERA Carpet	1183.18	109.92
Balcony	24.98	2.32
<b>Total Area</b>	<b>1208.16</b>	<b>112.24</b>

MAHARERA NO: P99000045490 | P99000045499 | P99000045599. Details available at <https://maharera.mahaonline.gov.in>

Disclaimer: The project Sunteck Beach Residences 1, Sunteck Beach Residences 2 & Sunteck Beach Residences 4 ("Projects") are being developed by Sunteck Real Estates Private Ltd. ("Promoter"). The layout plan, the number of buildings / villas / towers / wings / structures and or flat layout, unit areas, the common areas, facilities and amenities, information, pictures, images, drawings, specifications, sketches and other details herein are merely creative imagination and an Architect's representation of proposed development which are only illustrative/indicative in nature. The Specifications, amenities and facilities will be as set out in the Agreement for Sale and on the RERA website under Registration No. P99000045490 | P99000045499 | P99000045599. Details available at <https://maharera.mahaonline.gov.in>. The plans and the location of the amenities may be subject to modification/change/revision/alteration in terms of approvals, orders, directions and/or regulations of the concerned/competent authorities, and/or for compliance with laws/regulations in force from time to time. The common areas and common amenities for the entire layout shall be made available for the entire project and will be completed and handed over after completion of the development of the entire Sunteck Beach Residences layout. The layout will have additional towers and each of building in the layout will have additional floors upto 30 floors or such upper floors as may be approved by competent authority & details of such proposed/ additional FSI & amended plans will be uploaded on RERA web site from time to time. The podium and parking displayed are proposed & intended development subject to changes in plan and subject to approval of competent authorities. The approved villas (as per current plan) are a separate part of the layout and will have independent ingress/egress from the internal layout roads. The proposed additional villas are part of future development subject to the approval of competent authorities. The proposed club and hotel are not part of common amenity of the layout and are additional facilities (that can be availed by the residents of the layout as per applicable terms & conditions for their use) on the plot appurtenant to the layout. The proposed road network around the layout is as per DP and not part of the Development of the layout. The adjoining plot is reserved for playground as per current applicable DCR. The proposed MHADA housing on adjacent plot / reservation, the future development (mixed use, including commercial, office, retail) as shown in the layout are proposed and are subject to modification and change as per the approval of competent authorities. The modification/alteration will be by following due procedure as prescribed under the Real Estate (Regulation and Development) Act, 2016, ("RERA") read with the provisions of the Maharashtra Real Estate (Regulation and Development) (Registration of real estate projects, Registration of real estate agents, rates of interest and disclosures on website) Rules, 2017 and the Rules and Regulations framed under RERA for Maharashtra ("RERA Rules") and the relevant applicable disclosures shall be made at an appropriate time. This electronic/printed material does not constitute any offer and/or contract of any type between the Promoter and the recipient.



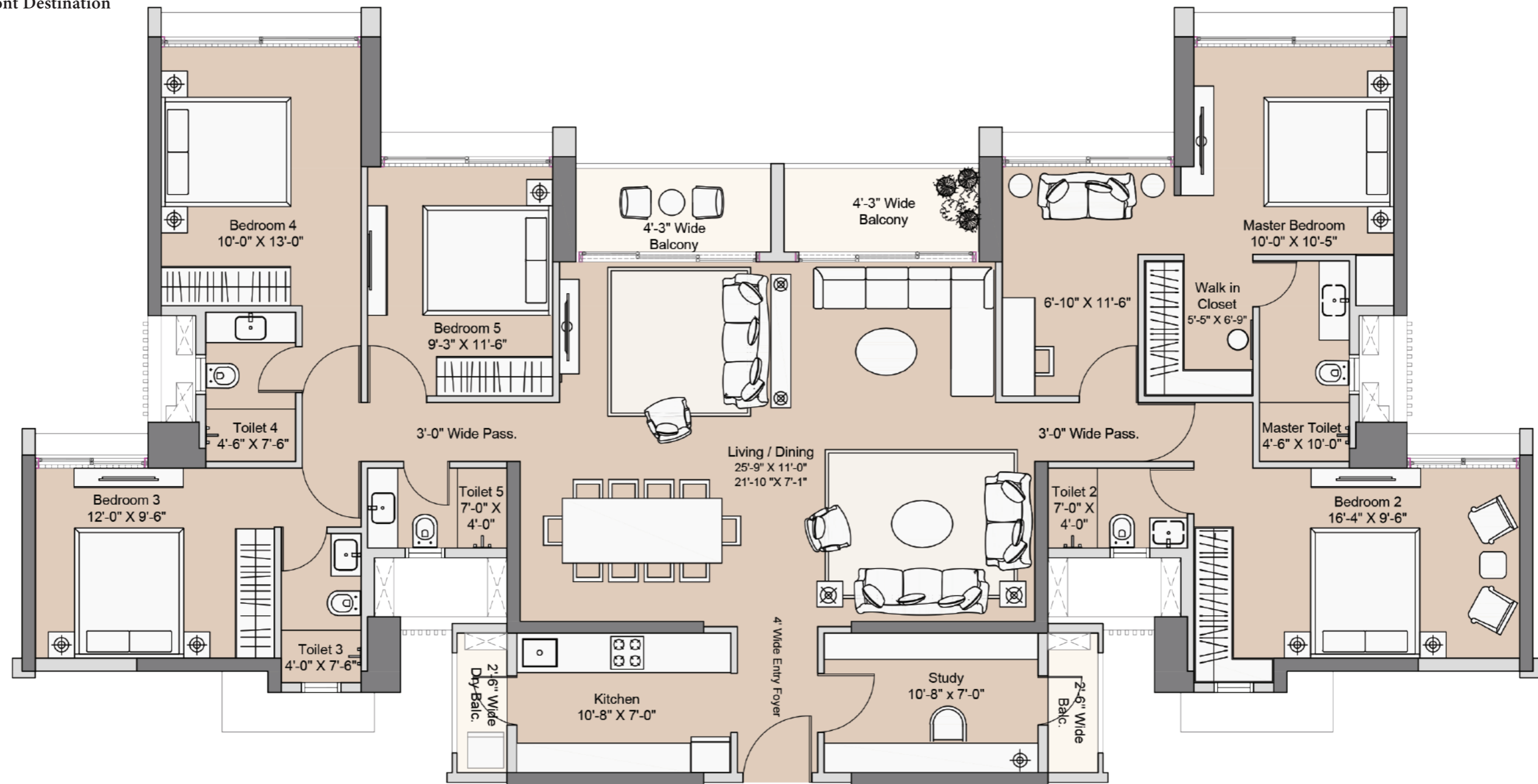


Jodi 2BHK (Type-1A)	SQ. FT.	SQ. MT.
RERA Carpet	1183.18	110.78
Balcony	76.42	7.10
<b>Total Area</b>	<b>1268.86</b>	<b>117.88</b>

MAHARERA NO: P99000045490 | P99000045499 | P99000045599. Details available at <https://maharera.mahaonline.gov.in>

Disclaimer: The project Sunteck Beach Residences 1, Sunteck Beach Residences 2 & Sunteck Beach Residences 4 ("Projects") are being developed by Sunteck Real Estates Private Ltd. ("Promoter"). The layout plan, the number of buildings / villas / towers / wings / structures and or flat layout, unit areas, the common areas, facilities and amenities, information, pictures, images, drawings, specifications, sketches and other details herein are merely creative imagination and an Architect's representation of proposed development which are only illustrative/indicative in nature. The Specifications, amenities and facilities will be as set out in the Agreement for Sale and on the RERA website under Registration No. P99000045490 | P99000045499 | P99000045599. Details available at <https://maharera.mahaonline.gov.in>. The plans and the location of the amenities may be subject to modification/change/revision/alteration in terms of approvals, orders, directions and/or regulations of the concerned/competent authorities, and/or for compliance with laws/regulations in force from time to time. The common areas and common amenities for the entire layout shall be made available for the entire project and will be completed and handed over after completion of the development of the entire Sunteck Beach Residences layout. The layout will have additional towers and each of building in the layout will have additional floors upto 30 floors or such upper floors as may be approved by competent authority & details of such proposed/ additional FSI & amended plans will be uploaded on RERA web site from time to time. The podium and parking displayed are proposed & intended development subject to changes in plan and subject to approval of competent authorities. The approved villas (as per current plan) are a separate part of the layout and will have independent ingress/egress from the internal layout roads. The proposed additional villas are part of future development subject to the approval of competent authorities. The proposed club and hotel are not part of common amenity of the layout and are additional facilities (that can be availed by the residents of the layout as per applicable terms & conditions for their use) on the plot appurtenant to the layout. The proposed road network around the layout is as per DP and not part of the Development of the layout. The adjoining plot is reserved for playground as per current applicable DCR. The proposed MHADA housing on adjacent plot / reservation, the future development (mixed use, including commercial, office, retail) as shown in the layout are proposed and are subject to modification and change as per the approval of competent authorities. The modification/alteration will be by following due procedure as prescribed under the Real Estate (Regulation and Development) Act, 2016, ("RERA") read with the provisions of the Maharashtra Real Estate (Regulation and Development) (Registration of real estate projects, Registration of real estate agents, rates of interest and disclosures on website) Rules, 2017 and the Rules and Regulations framed under RERA for Maharashtra ("RERA Rules") and the relevant applicable disclosures shall be made at an appropriate time. This electronic/printed material does not constitute any offer and/or contract of any type between the Promoter and the recipient.



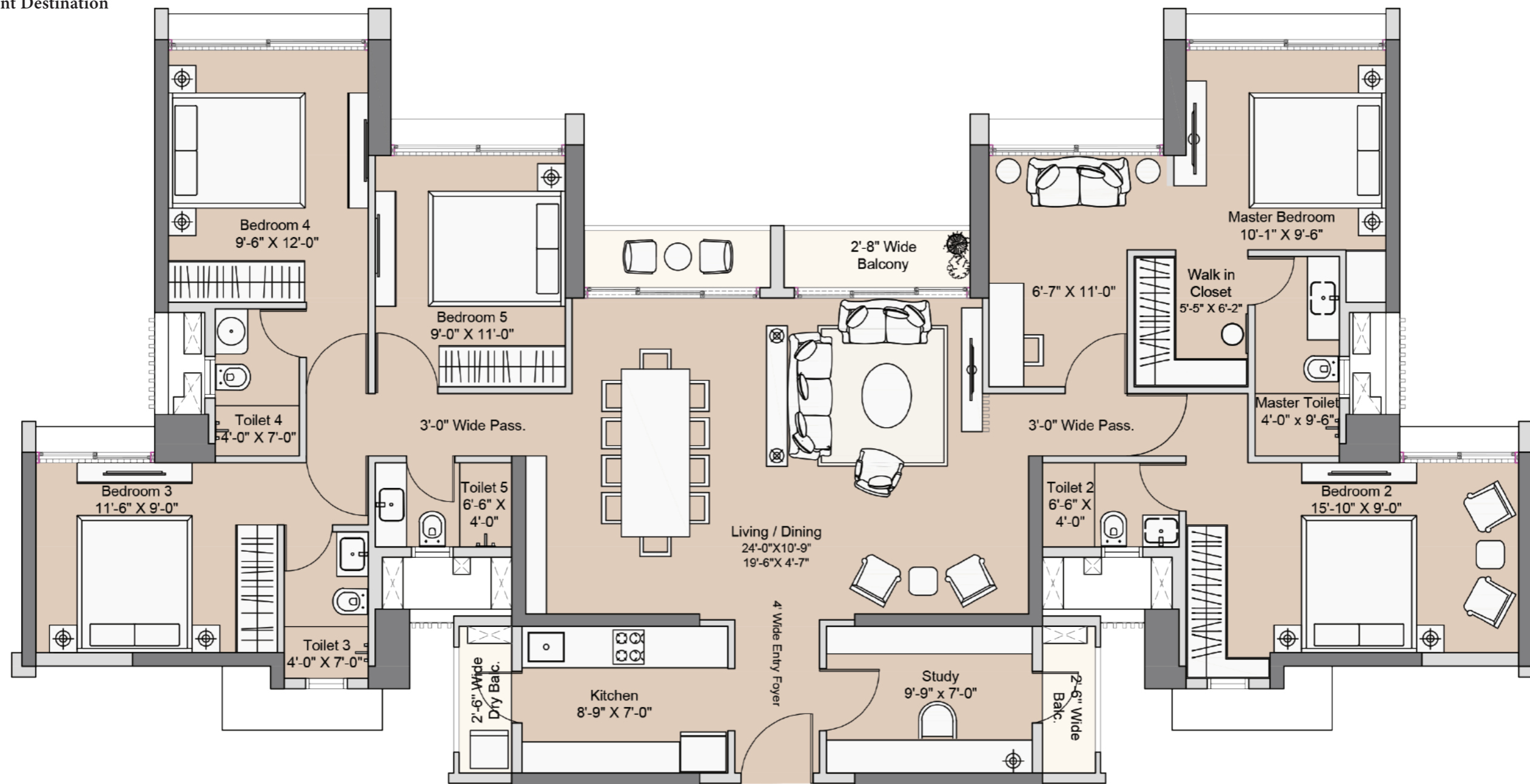


Jodi 3BHK (Type-1A)	SQ. FT.	SQ. MT.
RERA Carpet	1703.08	158.22
Balcony	112.38	10.44
<b>Total Area</b>	<b>1815.46</b>	<b>168.66</b>

MAHARERA NO: P99000045490 | P99000045499 | P99000045599. Details available at <https://maharera.mahaonline.gov.in>

Disclaimer: The project Sunteck Beach Residences 1, Sunteck Beach Residences 2 & Sunteck Beach Residences 4 ("Projects") are being developed by Sunteck Real Estates Private Ltd. ("Promoter"). The layout plan, the number of buildings / villas / towers / wings / structures and or flat layout, unit areas, the common areas, facilities and amenities, information, pictures, images, drawings, specifications, sketches and other details herein are merely creative imagination and an Architect's representation of proposed development which are only illustrative/indicative in nature. The Specifications, amenities and facilities will be as set out in the Agreement for Sale and on the RERA website under Registration No. P99000045490 | P99000045499 | P99000045599. Details available at <https://maharera.mahaonline.gov.in>. The plans and the location of the amenities may be subject to modification/change/revision/alteration in terms of approvals, orders, directions and/or regulations of the concerned/competent authorities, and/or for compliance with laws/regulations in force from time to time. The common areas and common amenities for the entire layout shall be made available for the entire project and will be completed and handed over after completion of the development of the entire Sunteck Beach Residences layout. The layout will have additional towers and each of building in the layout will have additional floors upto 30 floors or such upper floors as may be approved by competent authority & details of such proposed/ additional FSI & amended plans will be uploaded on RERA web site from time to time. The podium and parking displayed are proposed & intended development subject to changes in plan and subject to approval of competent authorities. The approved villas (as per current plan) are a separate part of the layout and will have independent ingress/egress from the internal layout roads. The proposed additional villas are part of future development subject to the approval of competent authorities. The proposed club and hotel are not part of common amenity of the layout and are additional facilities (that can be availed by the residents of the layout as per applicable terms & conditions for their use) on the plot appurtenant to the layout. The proposed road network around the layout is as per DP and not part of the Development of the layout. The adjoining plot is reserved for playground as per current applicable DCR. The proposed MHADA housing on adjacent plot / reservation, the future development (mixed use, including commercial, office, retail) as shown in the layout are proposed and are subject to modification and change as per the approval of competent authorities. The modification/alteration will be by following due procedure as prescribed under the Real Estate (Regulation and Development) Act, 2016, ("RERA") read with the provisions of the Maharashtra Real Estate (Regulation and Development) (Registration of real estate projects, Registration of real estate agents, rates of interest and disclosures on website) Rules, 2017 and the Rules and Regulations framed under RERA for Maharashtra ("RERA Rules") and the relevant applicable disclosures shall be made at an appropriate time. This electronic/printed material does not constitute any offer and/or contract of any type between the Promoter and the recipient.



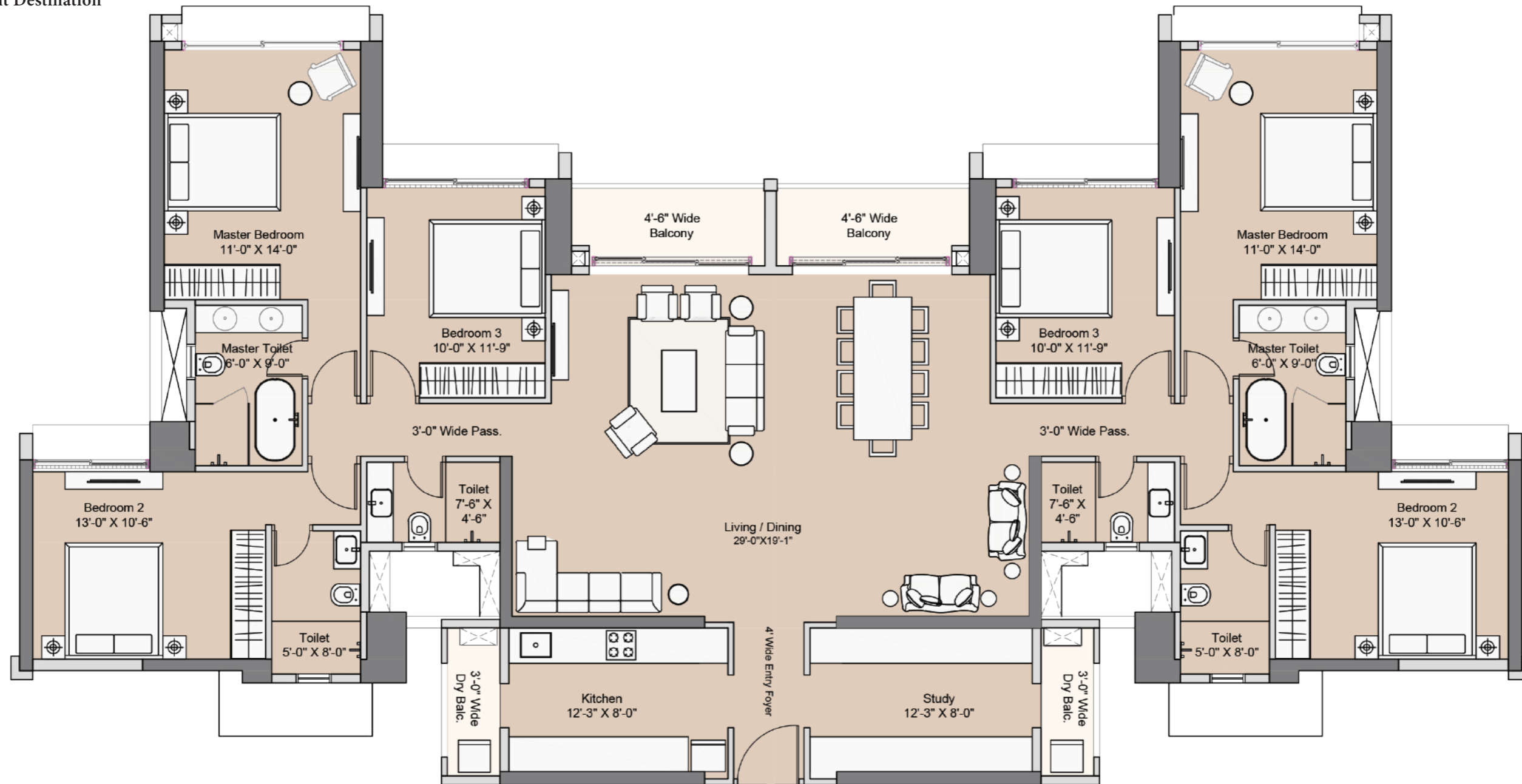


Jodi 3BHK (Type-2A)	SQ. FT.	SQ. MT.
RERA Carpet	1492.32	138.64
Balcony	78.58	7.30
<b>Total Area</b>	<b>1570.90</b>	<b>145.92</b>

MAHARERA NO: P99000045490 | P99000045499 | P99000045599. Details available at <https://maharera.mahaonline.gov.in>

Disclaimer: The project Sunteck Beach Residences 1, Sunteck Beach Residences 2 & Sunteck Beach Residences 4 ("Projects") are being developed by Sunteck Real Estates Private Ltd. ("Promoter"). The layout plan, the number of buildings / villas / towers / wings / structures and or flat layout, unit areas, the common areas, facilities and amenities, information, pictures, images, drawings, specifications, sketches and other details herein are merely creative imagination and an Architect's representation of proposed development which are only illustrative/indicative in nature. The Specifications, amenities and facilities will be as set out in the Agreement for Sale and on the RERA website under Registration No. P99000045490 | P99000045499 | P99000045599. Details available at <https://maharera.mahaonline.gov.in>. The plans and the location of the amenities may be subject to modification/change/revision/alteration in terms of approvals, orders, directions and/or regulations of the concerned/competent authorities, and/or for compliance with laws/regulations in force from time to time. The common areas and common amenities for the entire project shall be made available for the entire project and will be completed and handed over after completion of the development of the entire Sunteck Beach Residences layout. The layout will have additional towers and each of building in the layout will have additional floors upto 30 floors or such upper floors as may be approved by competent authority & details of such proposed/ additional FSI & amended plans will be uploaded on RERA web site from time to time. The podium and parking displayed are proposed & intended development subject to changes in plan and subject to approval of competent authorities. The approved villas (as per current plan) are a separate part of the layout and will have independent ingress/egress from the internal layout roads. The proposed additional villas are part of future development subject to the approval of competent authorities. The proposed club and hotel are not part of common amenity of the layout and are additional facilities (that can be availed by the residents of the layout as per applicable terms & conditions for their use) on the plot appurtenant to the layout. The proposed road network around the layout is as per DP and not part of the Development of the layout. The adjoining plot is reserved for playground as per current applicable DCR. The proposed MHADA housing on adjacent plot / reservation, the future development (mixed use, including commercial, office, retail) as shown in the layout are proposed and are subject to modification and change as per the approval of competent authorities. The modification/alteration will be by following due procedure as prescribed under the Real Estate (Regulation and Development) Act, 2016, ("RERA") read with the provisions of the Maharashtra Real Estate (Regulation and Development) (Registration of real estate projects, Registration of real estate agents, rates of interest and disclosures on website) Rules, 2017 and the Rules and Regulations framed under RERA for Maharashtra ("RERA Rules") and the relevant applicable disclosures shall be made at an appropriate time. This electronic/printed material does not constitute any offer and/or contract of any type between the Promoter and the recipient.





Jodi 3BHK (Type-4A)	SQ. FT.	SQ. MT.
RERA Carpet	2063.68	191.72
Balcony	141.88	13.18
<b>Total Area</b>	<b>2205.56</b>	<b>204.90</b>

MAHARERA NO: P99000045490 | P99000045499 | P99000045599. Details available at <https://maharera.mahaonline.gov.in>

Disclaimer: The project Sunteck Beach Residences 1, Sunteck Beach Residences 2 & Sunteck Beach Residences 4 ("Projects") are being developed by Sunteck Real Estates Private Ltd. ("Promoter"). The layout plan, the number of buildings / villas / towers / wings / structures and or flat layout, unit areas, the common areas, facilities and amenities, information, pictures, images, drawings, specifications, sketches and other details herein are merely creative imagination and an Architect's representation of proposed development which are only illustrative/indicative in nature. The Specifications, amenities and facilities will be as set out in the Agreement for Sale and on the RERA website under Registration No. P99000045490 | P99000045499 | P99000045599. Details available at <https://maharera.mahaonline.gov.in>. The plans and the location of the amenities may be subject to modification/change/revision/alteration in terms of approvals, orders, directions and/or regulations of the concerned/competent authorities, and/or for compliance with laws/regulations in force from time to time. The common areas and common amenities for the entire layout shall be made available for the entire project and will be completed and handed over after completion of the development of the entire Sunteck Beach Residences layout. The layout will have additional towers and each of building in the layout will have additional floors upto 30 floors or such upper floors as may be approved by competent authority & details of such proposed/ additional FSI & amended plans will be uploaded on RERA web site from time to time. The podium and parking displayed are proposed & intended development subject to changes in plan and subject to approval of competent authorities. The approved villas (as per current plan) are a separate part of the layout and will have independent ingress/egress from the internal layout roads. The proposed additional villas are part of future development subject to the approval of competent authorities. The proposed club and hotel are not part of common amenity of the layout and are additional facilities (that can be availed by the residents of the layout as per applicable terms & conditions for their use) on the plot appurtenant to the layout. The proposed road network around the layout is as per DP and not part of the Development of the layout. The adjoining plot is reserved for playground as per current applicable DCR. The proposed MHADA housing on adjacent plot / reservation, the future development (mixed use, including commercial, office, retail) as shown in the layout are proposed and are subject to modification and change as per the approval of competent authorities. The modification/alteration will be by following due procedure as prescribed under the Real Estate (Regulation and Development) Act, 2016, ("RERA") read with the provisions of the Maharashtra Real Estate (Regulation and Development) (Registration of real estate projects, Registration of real estate agents, rates of interest and disclosures on website) Rules, 2017 and the Rules and Regulations framed under RERA for Maharashtra ("RERA Rules") and the relevant applicable disclosures shall be made at an appropriate time. This electronic/printed material does not constitute any offer and/or contract of any type between the Promoter and the recipient.



# Sunteck

📞 022 5064 5644 | [www.sbrmumbai.com](http://www.sbrmumbai.com)

**Site Address:** Sunteck Beach Residences, Suruchi Beach Road, Vasai (W) – 401201 | **Corporate Office:** Sunteck Centre, 5th Floor, 37 – 40 Subhash Road, Vile Parle (E), Mumbai – 400 057, India.

**MAHARERA NO: P99000045490 | P99000045499 | P99000045599. Details available at <https://maharera.mahaonline.gov.in>**

Disclaimer: The project Sunteck Beach Residences 1, Sunteck Beach Residences 2 & Sunteck Beach Residences 4 ("Projects") are being developed by Sunteck Real Estates Private Ltd. ("Promoter"). The photographs, images, pictures, visuals used are stock photography. The images are for illustrative purposes only. The specifications are merely an Architect impression of the Projects. The Specifications, amenities and facilities will be as set out in the Agreement for Sale and on the RERA website under Registration No. P99000045490 | P99000045499 | P99000045599. Details available at <https://maharera.mahaonline.gov.in>. The plans and the location of the amenities may be subject to modification/change/revision/alteration in terms of approvals, orders, directions and/or regulations of the concerned/competent authorities, and/or for compliance with laws/regulations in force from time to time. The common areas and common amenities for the entire layout shall be made available for the entire project and will be completed and handed over after completion of the development of the entire building layout. The layout will have additional towers and each of building in the layout will have additional floors as may be approved by competent authority & details of such proposed/ additional FSI & amended plans will be uploaded on RERA web site from time to time. The approved villas (as per current plan) are a separate part of the layout and will have independent ingress/egress from the internal layout roads. The additional villas are part of future development subject to the approval of competent authorities. The proposed club and hotel are not part of common amenity of the layout and are additional facilities (that can be availed by the residents of the layout as per applicable terms & conditions for their use) on the plot appurtenant to the layout. The modification/alteration will be by following due procedure as prescribed under the Real Estate (Regulation and Development) Act, 2016, ("RERA") read with the provisions of the Maharashtra Real Estate (Regulation and Development) (Registration of real estate projects, Registration of real estate agents, rates of interest and disclosures on website) Rules, 2017 and the Rules and Regulations framed under RERA for Maharashtra ("RERA Rules") and the relevant applicable disclosures shall be made at an appropriate time. This electronic/printed material does not constitute an offer and/or contract of any type between the Promoter and the recipient. No booking or allotment shall be deemed to have been made on the basis of this electronic/printed material. \*Terms & Conditions Apply. Offer's, if any provided subject to loan eligibility of the customer. Any offer/scheme is at the sole discretion of the Promoter and/or banks/financial institutions and is subject to change/alteration/modification/withdrawal without any prior notice. #Post booking, customer will have to pay a balance amount as per applicable payment schedule mentioned in the Booking Application form/Agreement For Sale. The rendered image depicts the view from the beach side to your home. The Beach view will be available from the units as per their location specific, from their respective buildings.

